

# Melton Weir Parkland Strategy

January 2024      DRAFT





ACKNOWLEDGEMENT OF COUNTRY

Melton City Council acknowledges First Nations peoples living and working in Melton. Council recognises the people of the Kulin Nations as the original custodians of the land now known as City of Melton. On behalf of the municipality, Council pays respect to their Elders, past, present and future.

Contents

1.	<b>Introduction</b>	<b>1</b>
	Background	1
	Project Objectives	1
	Traditional Owners	2
	History	3
	Reservoir Water Storage	4
2.	<b>Existing Conditions</b>	<b>5</b>
3.	<b>Strategic Context</b>	<b>6</b>
4.	<b>Community Consultation</b>	<b>7</b>
5.	<b>Parkland Strategy</b>	<b>8</b>
	Parkland Strategy Plan	8
	Arnolds Creek Confluence Plan	9
	Parkland Furniture and Fencing	10
	Precedent Imagery	11
6.	<b>Implementation</b>	<b>12</b>
	Appendix A: Strategic Context Summary	14
	Appendix B: Consultation Summary	16







# 1. Introduction

## Background

The Melton Weir, also known as Melton Reservoir, is located to the south of the Melton Township. The City of Melton is one of the fastest growing municipalities in Australia, with the population forecast to grow from 209,145 in 2023 to 416,106 by 2051.<sup>1</sup> New suburbs are creating an urban interface along the north eastern edge of the weir including Weir Views and Brookfield. Rural and agricultural properties in Exford about the western and southern edge of the weir.

The study area for the strategy extends from the western edge of the Scenic Botanica development the weir near the Exford Road bridge, including connections to Toolern Creek and Arnolds Creek.

The Melton Reservoir is managed by Southern Rural Water. The principal use of the reservoir is for water storage and supply for market gardens throughout the Werribee Irrigation District.

Fragmented land ownership and management presents a significant challenge between farmers, developers, Council and Southern Rural Water. There are issues with dumping and other antisocial activities especially in the area near the end of Clarkes Road.

The Melton Runabout & Speedboat Club (MRSBC) and the Melton Pistol Club are located within the parkland strategy focus area. The MRSBC is located towards the southern end of the reservoir on the western bank. Club facilities include clubhouse, boat ramp and viewing areas. The MRSBC host motorboat racing events, including the national level the Melton Gold Cup, as well as fishing, water skiing, and wakeboarding<sup>2</sup>. The MRSBC currently operates the only boat ramp in to the reservoir which is only accessible by club members. The Melton Pistol Club is located at the Arnolds Creek confluence. Access to the club is from the end of Clarkes Road. The club is currently closed as it undertakes a review of club operations. There are no plans to relocate the clubs from their existing locations as park of the parkland strategy.

## Project Objectives

The objective of the Melton Weir Parkland Strategy is to outline the proposed development of the parklands along the edge of the Melton Reservoir to create a regional destination.

Project objectives are to:

- Identify recreational opportunities along the parkland interface to the reservoir
- Identify opportunities for recreation activities along to the waters edge within the Parklands
- Connecting the Parklands to broader linear open spaces
- Propose shared path connections to the reservoir and connections to the Melton Township, Eynesbury and Cobblebank Activity Centre.
- Develop a prioritised Action Plan including short and long term actions.

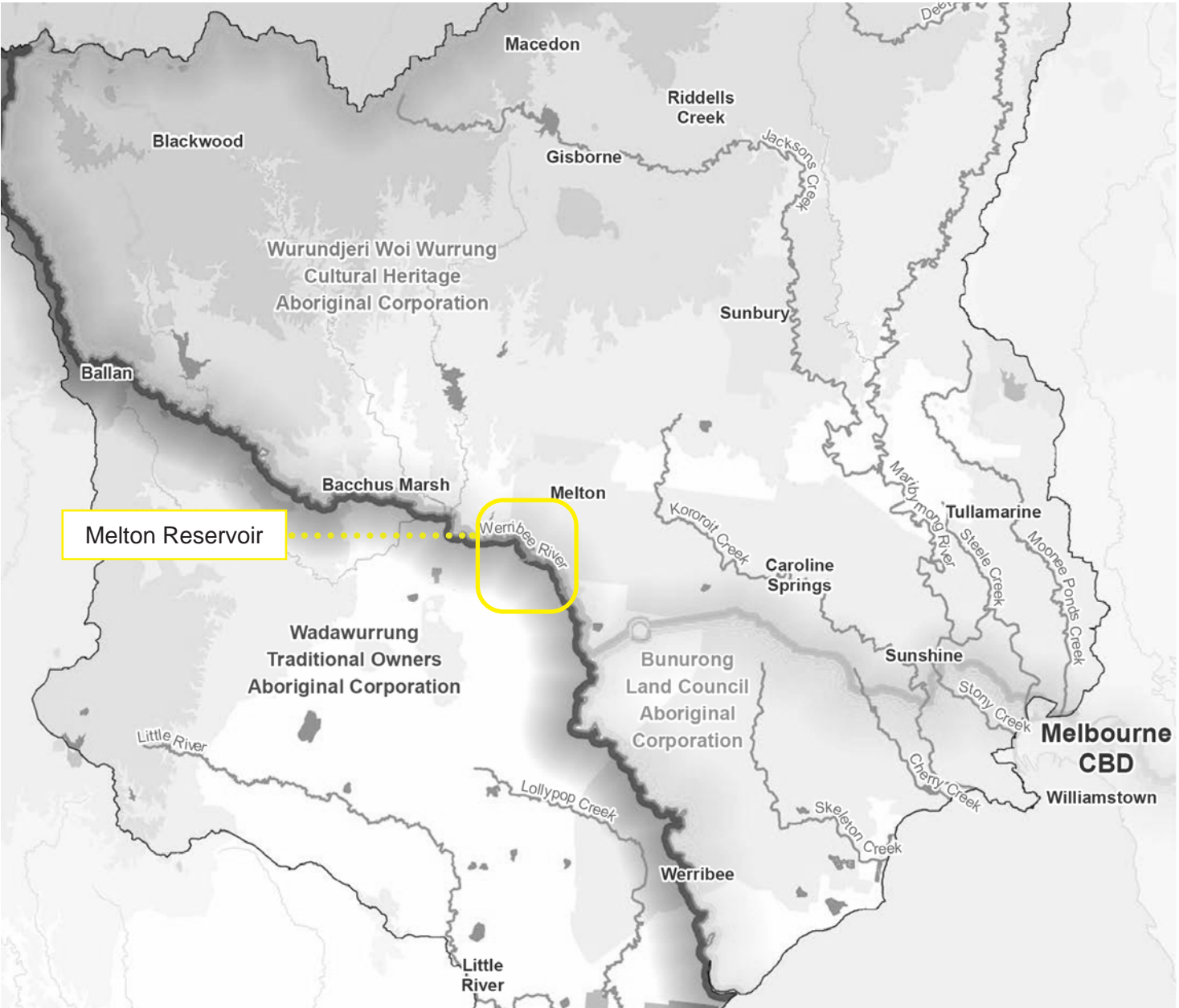
<sup>1</sup> City of Melton population forecasts, <https://forecast.id.com.au/melton>  
<sup>2</sup> 'Notice Board' <https://www.mrsbc.com.au/water-skiing-fishing>





**Traditional Owners and Aboriginal communities**

The Wirribi Yaluk (Werribee River) acts as a boundary between the Wurundjeri Woiwurrung People to the east and Wadawurrang People to the west. Further south along the Wirribi Yaluk is an intersection between the Wurundjeri Woiwurrung People, Wadawurrang People and Bunurong People.<sup>3</sup>



**Fig. 1:1:** Registered Aboriginal Party boundaries within Waterways of the West region.  
Source: DECCA, 'Waterways of the West Action Plan', 2021

<sup>3</sup> DECCA 'Waterways of the West Action Plan', 2021, p1



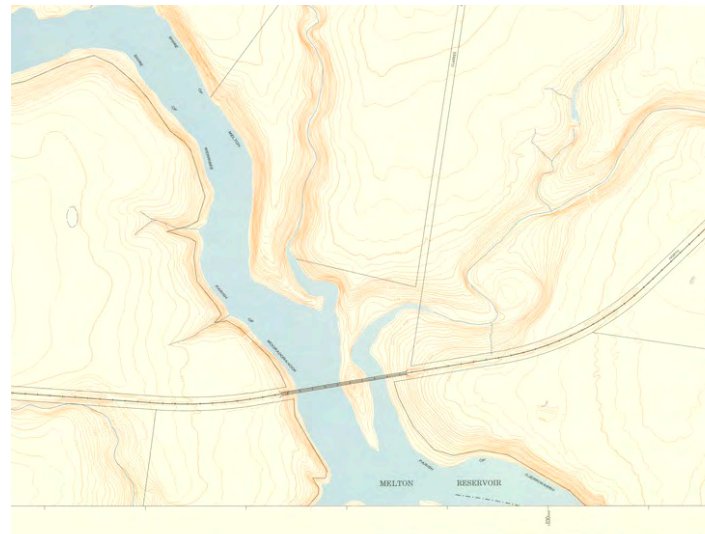
## History

In the late 1830s the now Melton area around the Werribee River functioned as a rural service centre for surrounding districts mainly used for grazing and farming. Growth in the area was largely due to the gold rush in the 1850s, followed by a second wave of expansion that took place from the 1890s into the early 1900s. This was mainly due to the construction of the railway line and the development of the Melton Reservoir.<sup>4</sup>

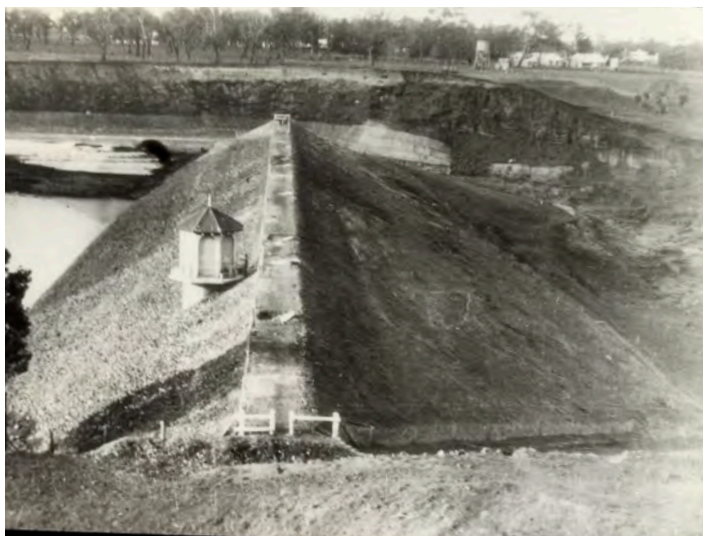
The reservoir was constructed between 1913 and 1916 with a capacity of 21,000 megalitres to be used for irrigation downstream at Werribee. In 1937, the embankment was raised and vertical lift spillway gates were installed to increase the capacity to 23,500 megalitres. Siltation has reduced its total volume back to 14,340 megalitres. From 1988 to 1994, additional upgrade works were undertaken included the remodeling of the spillway, removal of the flood gates, and the development of a second spillway.<sup>5</sup>



**Fig. 1.2:** Construction of the Melton Dam.  
Source: State Library of Victoria, 1940's



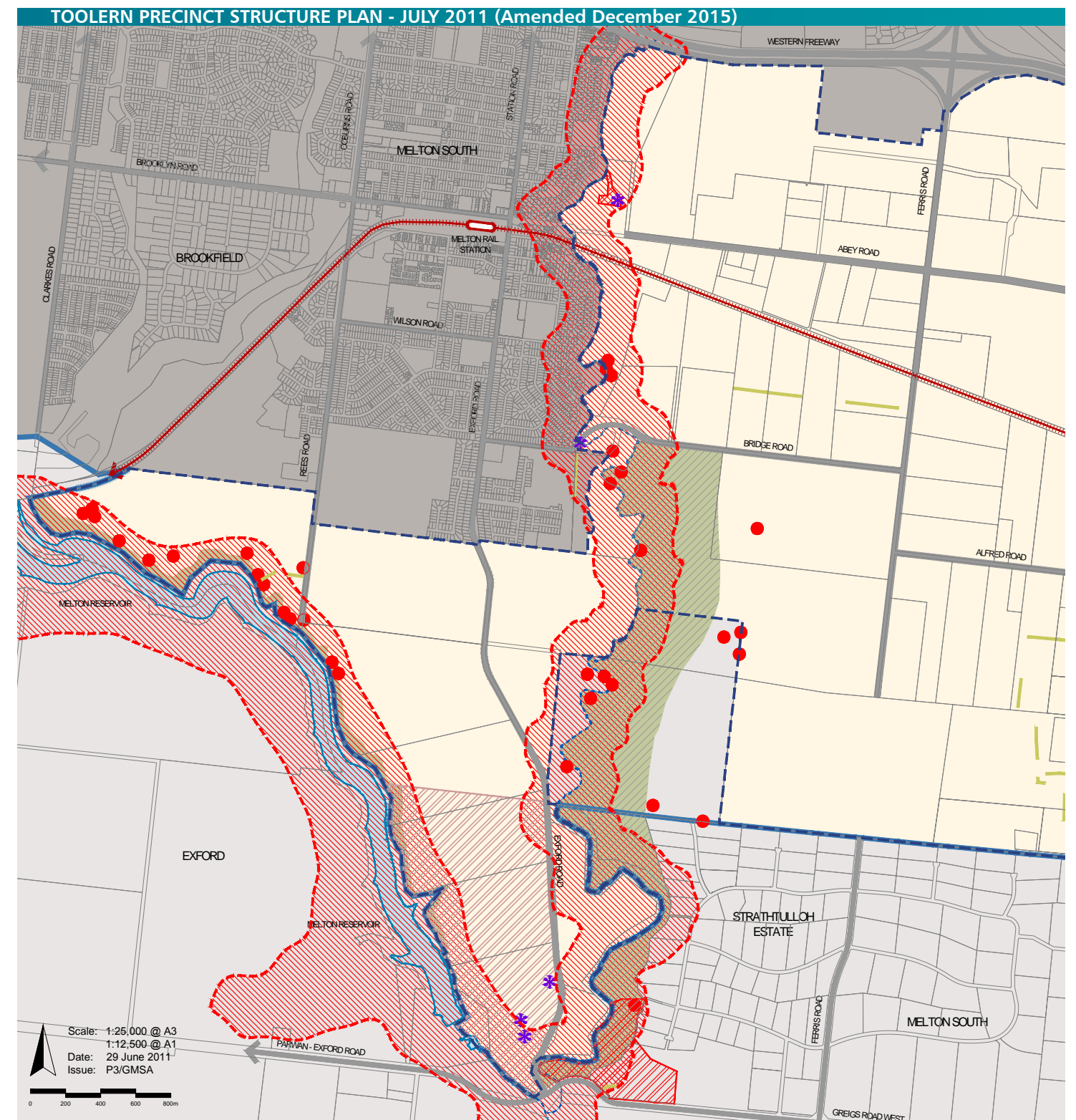
**Fig. 1.3:** Arnolds Creek confluence map.  
Source: State Library of Victoria, 1964



**Fig. 1.4:** Melton Reservoir.  
Source: State Library of Victoria, 1900/1940



**Fig. 1.5:** Melton spillway and regulator gates.  
Source: State Library of Victoria, 1954



**Fig. 1.6:** Heritage Plan  
Source: VPA, Toolern Precinct Structure Plan, 2011

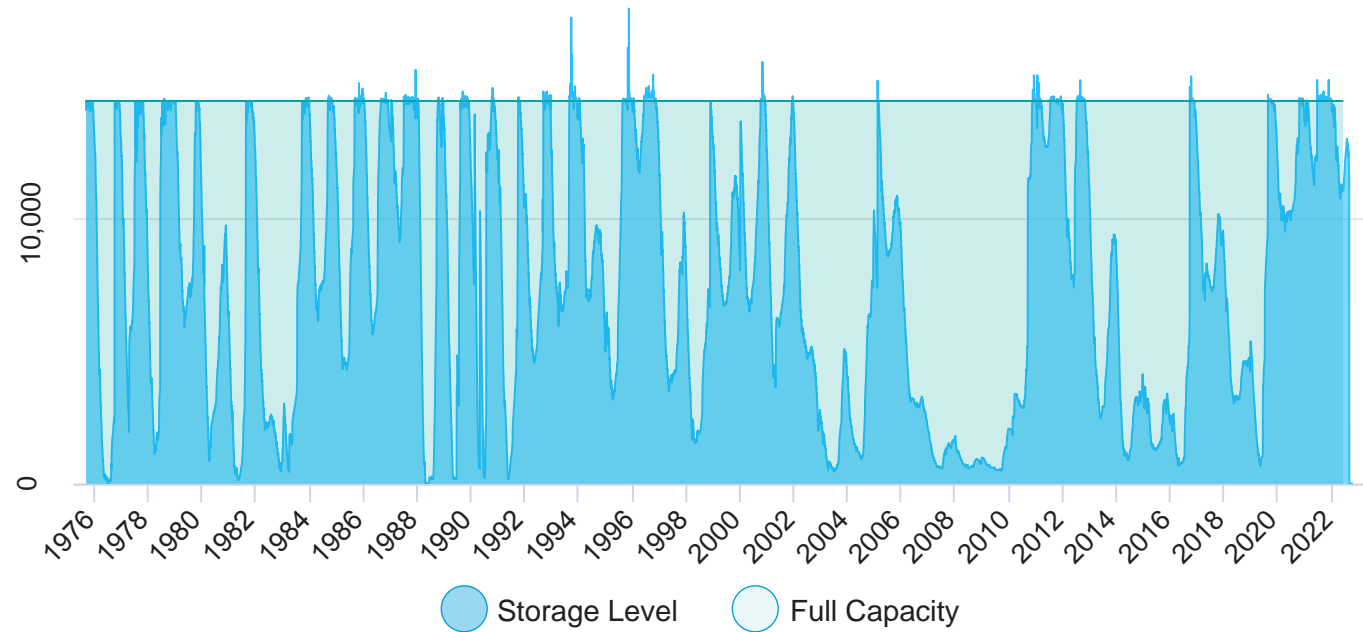
<sup>4</sup> Settlement history', <https://profile.id.com.au/melton/about>

<sup>5</sup> 'History', <https://www.srw.com.au/water-and-storage/water-storages/melton-reservoir>



Reservoir Water Storage

The Melton Weir is one of few permanent bodies of freshwater in the western region of metropolitan Melbourne. It is surrounded by steep, rocky escarpments for the majority of the reservoir edges.<sup>6</sup> The water level fluctuates by up to 7 metres in height, reflecting the inconsistent rainfall in the area and irrigation demand.



**Fig. 1.7:** Melton Reservoir water storage  
Source: Southern Rural Water



**Fig. 1.8:** Low water storage along the escarpment overlooking Melton Reservoir in 2016.



**Fig. 1.9:** Fluctuation of water storage at the Arnolds Creek confluence.



## 2. Existing Conditions

The following photographs provide an overview of current site conditions.



Carpark and footbridge to Melton Pistol Club from Clarkes Road



Views from shared path along new residential interface



Recently constructed open space interface



Heritage listed Federation period Former Melton Stud, grave of 'The Welkin' and the weatherboard stallion box



Historically listed Melton Viaduct



New residential development extending towards the weir



Melton Runabout & Speedboat Club: clubhouse and boat ramp



Erosion as a result of unrestricted access and fluctuating water levels



Revegetation of escarpment along new residential interface



Existing Southern Rural Water picnic facilities area near the weir



High water levels flowing over the weir and spillway in late 2022



### 3. Strategic Context

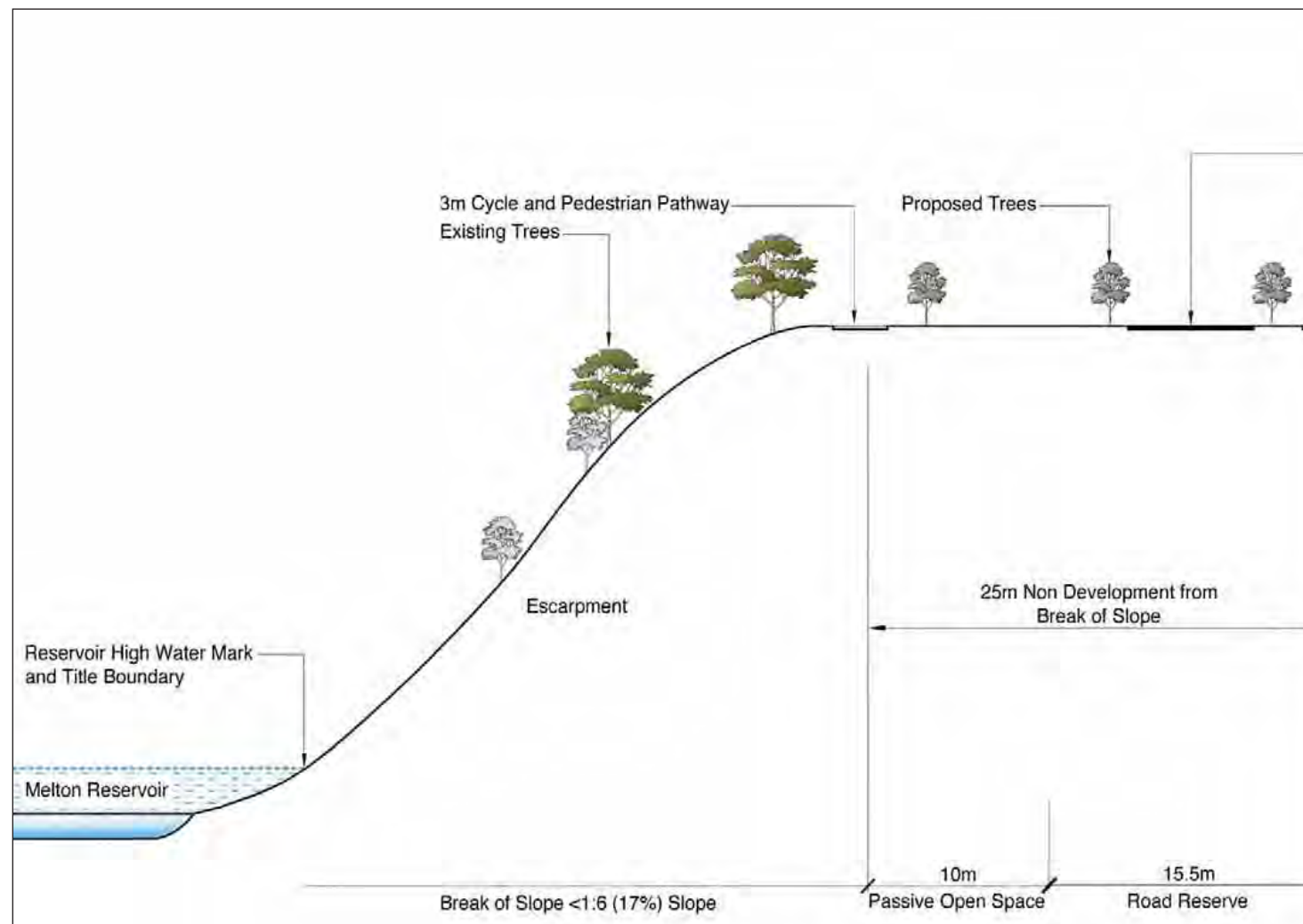
The following is a summary of key documents that have informed the development of the Melton Weir Parkland Strategy.

The full summary of documents is included in Appendix A.

#### The Toolern Precinct Structure Plan (Victorian Planning Authority, 2011)

The Toolern Precinct Structure Plan (PSP) is a key influence of the Parkland Strategy. It defines the parkland boundary and has proposed recreation facilities including trails, neighborhood activity centres, open spaces, vegetation protection, location community facilities/schools, wetlands and waterways.

The PSP also includes the Melton Reservoir open space/ residential interface diagram. The diagram in Fig. 3.1 illustrates how the offset to residential development is determined along the interface with the Melton Reservoir. A 25m buffer zone from the top of the break of slope is proposed which includes the location of a shared trail and road reserve so residential lots overlook the Parklands.



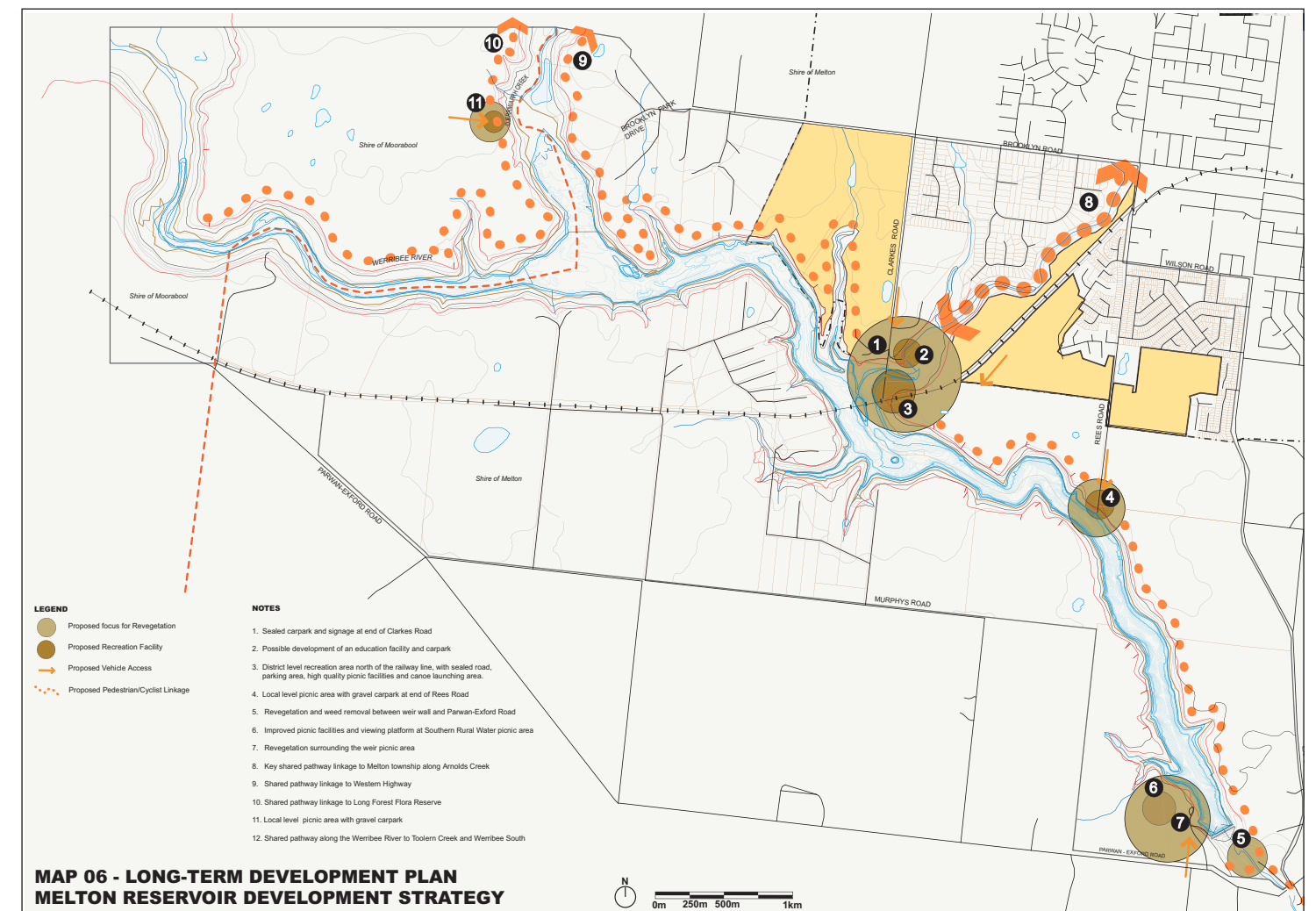
**Fig. 3.1:** Melton reservoir open space/residential interface.  
Source: Toolern Precinct Structure Plan, 2011, p41

#### The Melton Reservoir Development Strategy (EDAW Gillespies, 2005)

This strategy recommends a shared path located within a linear park network extending along the eastern edge of the reservoir, linking to the regional open space network along the Werribee River and Djerriwarrh Creek. It also recommends linking the reservoir to the Melton Township.

The strategy proposes the creation of a district level recreation node located at the Arnolds Creek confluence, incorporating sealed roads and car parks, formal picnic areas, toilets, a playground and a launching area for non-motorised water craft. It also recommends a district level passive recreation reserve at the existing Southern Rural Water picnic facility including a viewing platform, upgraded picnic facilities and landscaped areas. It also proposes two local level nodes at Rees Road and Hopetoun Park Road.

The strategy recommends that a weed management plan is developed and implemented.



**Fig. 3.2:** Long-term development plan.  
Source: Melton Reservoir Development Strategy, 2005, p39



# 4. Consultation

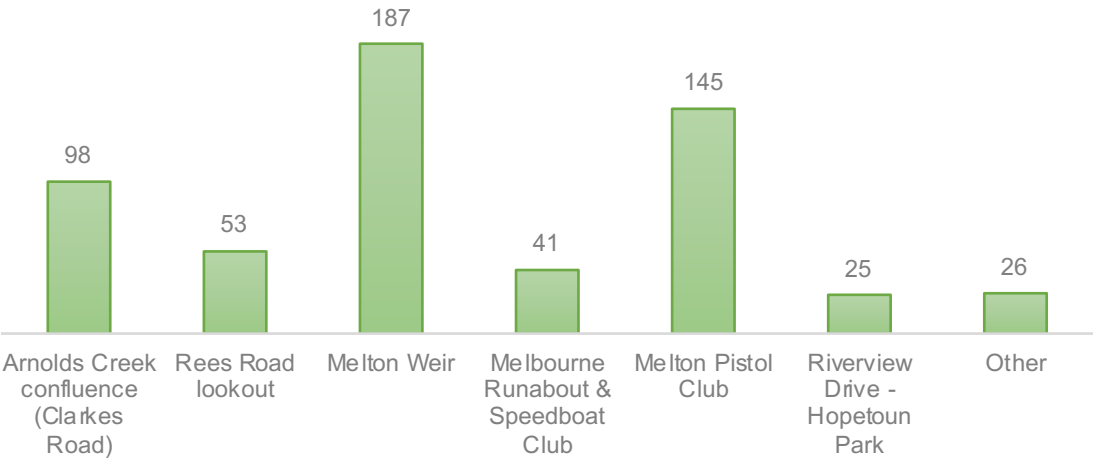
Community engagement for the Melton Weir Parkland Strategy was undertaken in two phases. The first phase of community engagement was completed in June 2023 and included the following:

- The Melton ‘Have Your Say’ page was publicly available from 24 April to 2 June 2023. The community was invited to provide feedback through the online survey. The survey received 1031 online views and 387 survey respondents.
- A project flyer with a QA code and links to the online survey was mailed to households within a 400m radius of the Melton Reservoir.
- On-site engagement session was held on 13 May 2023.
- 172 respondents registered for updates via the Melton Weir Parkland Strategy project website.

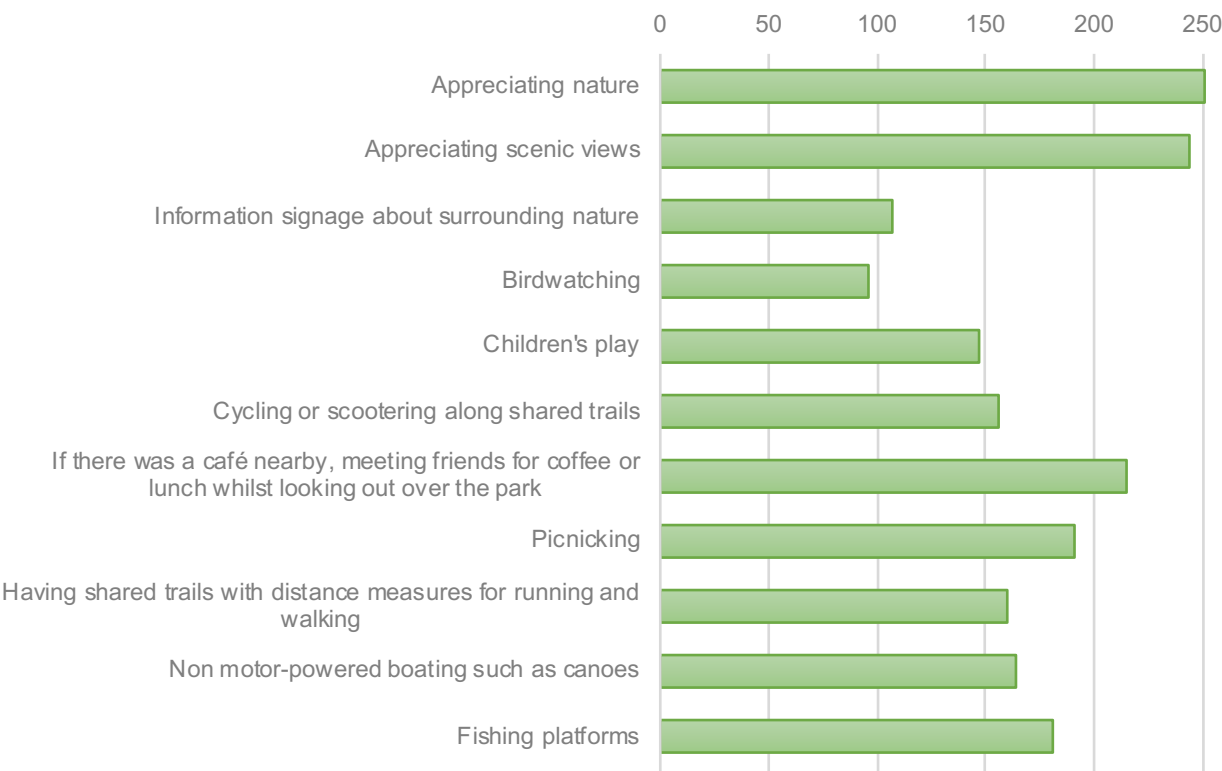


**Fig. 4.1:** On-site community consultation on 13th May 2023 at the shelter near the end of Rees Road

The online survey and on-site engagement session provided valuable insight into where visitors frequent the parklands, notably the Melton Weir and Arnolds Creek confluence (including the Melton Pistol Club).



The survey also provided information on the types of activities respondents wanted included in the parklands.



In addition to survey questions, the following is a summary of the key issues and opportunities raised by the community.

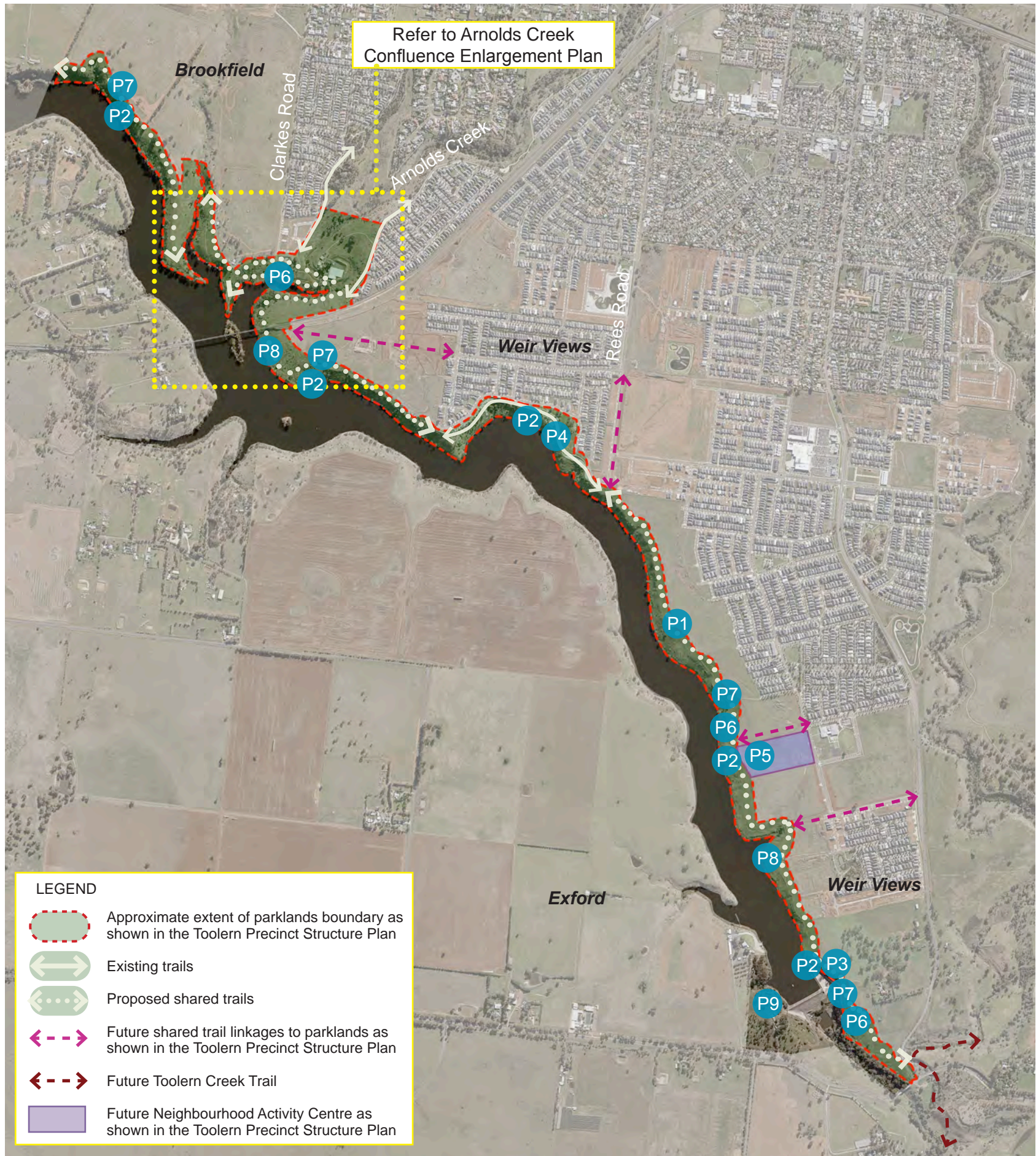
- There is a lack of viewing options such as lookouts at key scenic locations along the reservoir.
- All trails should be accessible along the eastern edge of the reservoir.
- There is currently low tree canopy cover and native vegetation throughout the parklands.
- There is no public access to water.
- There is no Wadawurrung and Wurundjeri Woiwurrung representation throughout the parklands.
- There is a preference for public access to the weir and spillway.
- Lack of public toilets.
- Opportunities for fishing platforms along the reservoir.
- Opportunities for public artwork.
- The inclusion of local groups to be involved in the management of the parklands
- Concerns of anti-social behaviour throughout the parklands
- Rubbish and dumping throughout the parklands
- There is a lack of signage to access the parklands

The following issues and opportunities raised during consultation have been taken into consideration and are not proposed to be included in the parklands.

- A designated dog off lead
- A designated area for events and festivals
- Public access to the weir and spillway
- Free camping spots along the reservoir edge

The community engagement summary is included in Appendix B





# 5. Parkland Strategy

The Parkland Strategy has been developed following the review of site conditions and analysis of strategic documents, plans and strategies. Community and stakeholder engagement has also provided valuable insights on community aspirations for the Parkland.

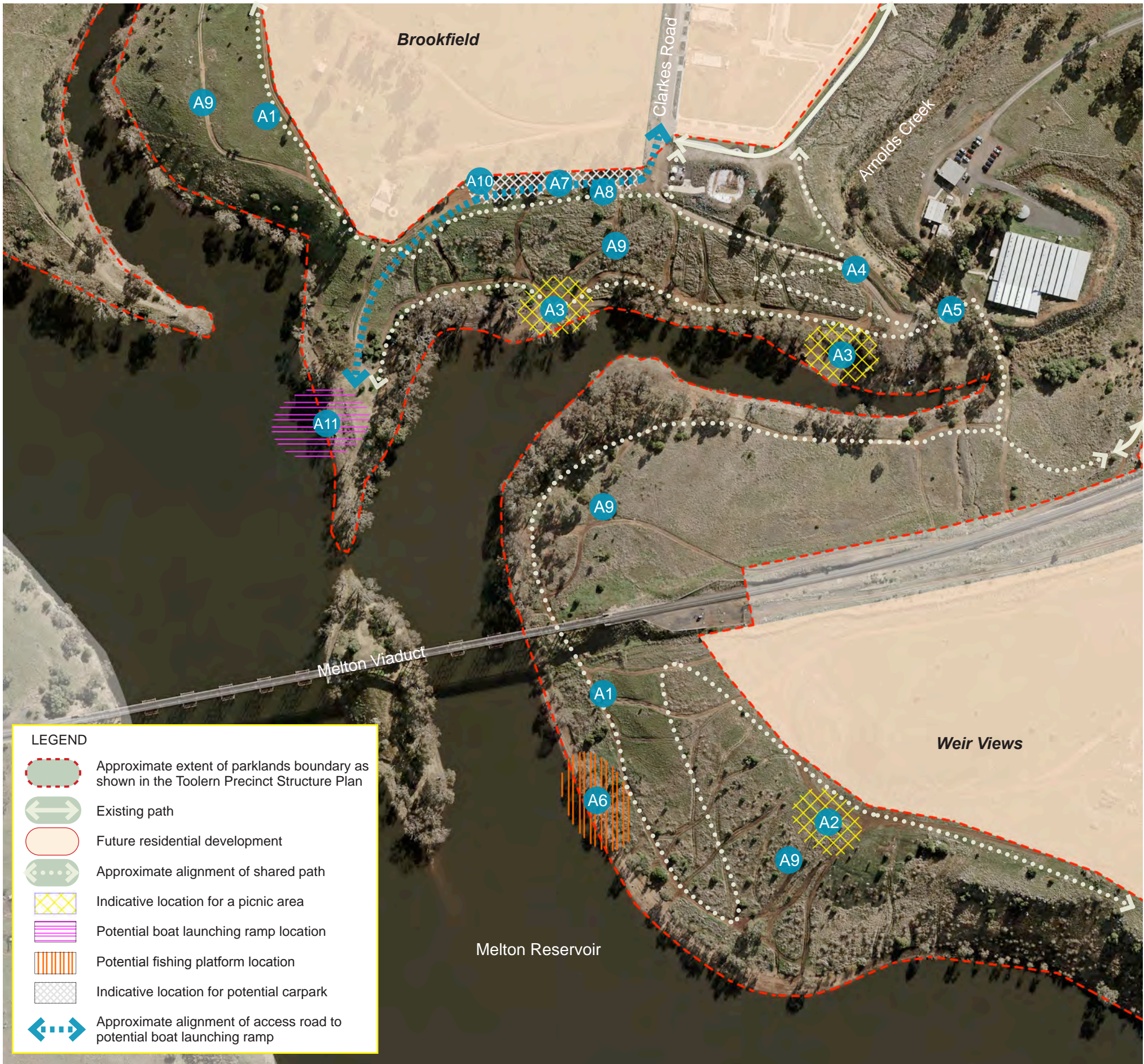
The following recommendations will assist the establishment of the Parklands that will be progressively constructed over time. Detail site investigations will be required to determine the final design of the Parkland elements.

- P1 Construct a continuous shared path along the eastern edge of the reservoir with connections to existing and future shared paths to the Melton Township, Eynesbury and Cobblebank Activity Centre.
- P2 Construct 5 viewing platforms at key locations along the parklands to enable visitors to enjoy views of the water and escarpments. Indicative locations include:
  - Brookfield,
  - Arnolds Creek confluence,
  - at the southern end of Rees Road,
  - near the future neighbourhood centre,
  - overlooking the weir and spillway in Weir Views.
- P3 Create a new picnic area on the east side of the weir near the spillway featuring a viewing platform, shelter, barbecues, picnic tables and bins.
- P4 Construct basketball half court in parklands at the southern end of Rees Road.
- P5 Investigate the potential location of a waterfront cafe with views over the water as part of the neighbourhood centre.
- P6 Install new play spaces. Indicative locations include:
  - at the southern end of Clarkes Road,
  - near the future neighbourhood activity centre,
  - near the weir wall.
- P7 Install 4 outdoor gyms in Brookfield, area south of the rail bridge, near the neighbourhood centre and near the weir
- P8 Investigate opportunities to install 2 fishing platforms in areas where the topography enables accessible grade paths to the waters edge. Proposed locations are the area south of the Melton Viaduct and the area to the south of the proposed neighbourhood activity centre
- P9 Decommission the Southern Rural Water picnic facilities and play space returning this area to maintenance and operations uses.

The following recommendations are not shown on the plan as final locations will be determined as part of detailed design.

- P10 Install bicycle repair stations at key locations along the shared trail and at the junction of connecting trails.
- P11 Install seating approximately every 250m along the parklands shared trail.
- P12 Increase tree canopy cover where appropriate to provide shade and shelter.
- P13 Install interpretive signage in key locations along the parkland trail. Signage to be in English, Woiwurrung and Wadawurrung text.
- P14 Implement wayfinding signage at key locations along shared path.
- P15 Review process of land management and maintenance to reduce rubbish and dumping as the Parklands and adjoining new residential developments are constructed.





**Arnolds Creek Confluence Plan**

The Arnolds Creek confluence is proposed to be a key destination within the parklands. The following are proposed upgrades to this precinct.

- A1** Connect Weir Views and Brookfield with a shared trail.
- A2** Create a new picnic area along parkland interface in Weir Views featuring a viewing platform, shelter, barbecues, bins and picnic tables.
- A3** Create a new picnic area on the northern edge of the confluence in close proximity to disabled parking bays featuring a shelter, barbecues, bins and picnic tables.
- A4** Replace the existing access road and carpark at the end of Clarkes Road with accessible walking tracks. Access to the Pistol Club is to be retained from Hinkler Crescent.
- A5** Update the existing pedestrian bridge over Arnolds Creek to strengthen the trail connections within the Parklands and surrounding residential areas.
- A6** Investigate opportunities for fishing with the construction of fishing platform south of the Melton Viaduct in Weir Views.
- A7** Investigate car parking at the end of Clarkes Road.
- A8** Install bollards and fencing to contain access to formalised tracks and revegetate disturbed areas with locally indigenous plant species.
- A9** Revegetation existing escarpments with locally indigenous plant species.
- A10** Investigate public toilets at the end of Clarkes Road.
- A11** Support the study undertaken by Better Boating Victoria and Southern Rural Water in terms of provision of a potential boat launching ramp and vehicular access road at the end of Clarkes Road. The feasibility of a boat launch will be subject to detailed site investigations as well as consideration of the 'on water' safety issues.



**Parkland Furniture and Fencing**

The following images are examples of the furniture and fencing proposed for the parklands.



Council standard seat



Council standard picnic table



Council standard bicycle hoops as installed in Weir Views



Fencing as installed in Weir Views



Double skillion roof shelter as installed in Weir Views



Council standard dual rubbish bins



Precedent Imagery

The following images are examples of some of the recommendations proposed for the parklands.



Kanteen, South Yarra



Lake Caroline, Caroline Springs

Examples of riverside dining options to be explored as part of the Neighborhood Activity Centre.



Create recreation nodes with seating, shelter, bins, drinking fountain, fitness station and bicycle repair station at Wimbledon Blvd, Cobblebank



Example of a lookout and signage which could be installed on the edge of the escarpment at Farrans Lookout, Tintaldra.



## 6. Implementation

The following table outlines the actions along with their estimated implementation costs. The Melton Weir Parkland interface is included within the Toolern PSP which allows Council to lobby developers for the development of trails and associated infrastructure within their land. This study along with the PSP provides Council with information to ensure the parkland interface is strategically aligned, funded and delivered in accordance with the region's plans.

### Parkland Plan

Item	Action	Delivery Responsibility		
		Council	Developer	SRW
P1	Construct a continuous shared path along the eastern edge of the reservoir with connections to existing and future shared paths to the Melton Township, Eynesbury and Cobblebank Activity Centre.	x	x	
P2	Construct 5 viewing platforms at key locations along the parklands to enable visitors to enjoy views of the water and escarpments. Indicative locations include: <ul style="list-style-type: none"> <li>Brookfield,</li> <li>Arnolds Creek confluence,</li> <li>at the southern end of Rees Road,</li> <li>near the future neighbourhood activity centre,</li> <li>overlooking the weir and spillway in Weir Views.</li> </ul>	x	x	
P3	Create a new picnic area on the east side of the weir near the spillway featuring a viewing platform, shelter, barbecues, picnic tables and bins.	x	x	
P4	Construct basketball half court in parklands at the end of Rees Road.	x		
P5	Investigate the potential location of a waterfront cafe with views over the water as part of the neighbourhood centre.	x	x	
P6	Install new play spaces. Indicative locations include: <ul style="list-style-type: none"> <li>at the southern end of Clarkes Road,</li> <li>near the future neighbourhood activity centre,</li> <li>near the weir wall.</li> </ul>	x	x	
P7	Install 4 outdoor gyms in Brookfield, area south of the rail bridge, near the neighbourhood centre and near the weir	x	x	
P8	Investigate opportunities to install 2 fishing platforms in areas where the topography enables accessible grade paths to the waters edge. Proposed locations are the area south of the Melton Viaduct and the area to the south of the proposed neighbourhood activity centre	x	x	x
P9	Decommission the Southern Rural Water picnic facilities and play space returning this area to maintenance and operations uses.	x		x
P10	Install bicycle repair stations at key locations along the shared trail and at the junction of connecting trails.	x	x	
P11	Install seating approximately every 250m along the parklands shared trail.	x	x	
P12	Increase tree canopy cover where appropriate to provide shade and shelter.	x	x	
P13	Install interpretive signage in key locations along the parkland trail. Signage to be in English, Woiwurrung and Wadawurrung text.	x	x	
P14	Implement wayfinding signage at key locations along shared path.	x	x	
P15	Review process of land management and maintenance to reduce rubbish and dumping as the Parklands and adjoining new residential developments are constructed.	x		



### Arnolds Creek Confluence Plan

Item	Action	Delivery Responsibility			
		Council	Developer	SRW	Better Boating Victoria
A1	Connect Weir Views and Brookfield with a shared trail.	x	x		
A2	Create a new picnic area along parkland interface in Weir Views featuring a viewing platform, shelter, barbecues, bins and picnic tables. (Viewing platform including in item P2)	x	x		
A3	Create a new picnic area on the northern edge of the confluence in close proximity to disabled parking bays featuring a shelter, barbecues, bins and picnic tables.	x			
A4	Replace the existing access road and carpark at the end of Clarkes Road with accessible walking tracks. Access to the Pistol Club is to be retained from Hinkler Crescent.	x			
A5	Update the existing pedestrian bridge over Arnolds Creek to strengthen the trail connections within the Parklands and surrounding residential areas.	x			
A6	Investigate opportunities for fishing with the construction of fishing platform south of the Melton Viaduct in Weir Views.	x	x	x	
A7	Investigate car parking at the end of Clarkes Road.	x			
A8	Install bollards and fencing to contain access to formalised tracks and revegetate disturbed areas with locally indigenous plant species.	x			
A9	Revegetation existing escarpments with locally indigenous plant species.	x	x	x	
A10	Investigate public toilets at the end of Clarkes Road.	x			
A11	Investigate the installation of a boat launching ramp and vehicular access road at the end of Clarkes Road. The feasibility of a boat launch will be subject to detailed site investigations as well as consideration of the 'on water' safety issues.	x		x	x



## Appendix A: Strategic Context Summary

The following is a summary of key documents that have informed the development of the Melton Weir Parkland Strategy.

### The Toolern Precinct Structure Plan (Victorian Planning Authority, 2011)

The Toolern Precinct Structure Plan (PSP) is a key influence of the Parkland Strategy. It defines the parkland boundary and has proposed recreation facilities including trails, neighborhood activity centres, open spaces, vegetation protection, location community facilities/schools, wetlands and waterways.

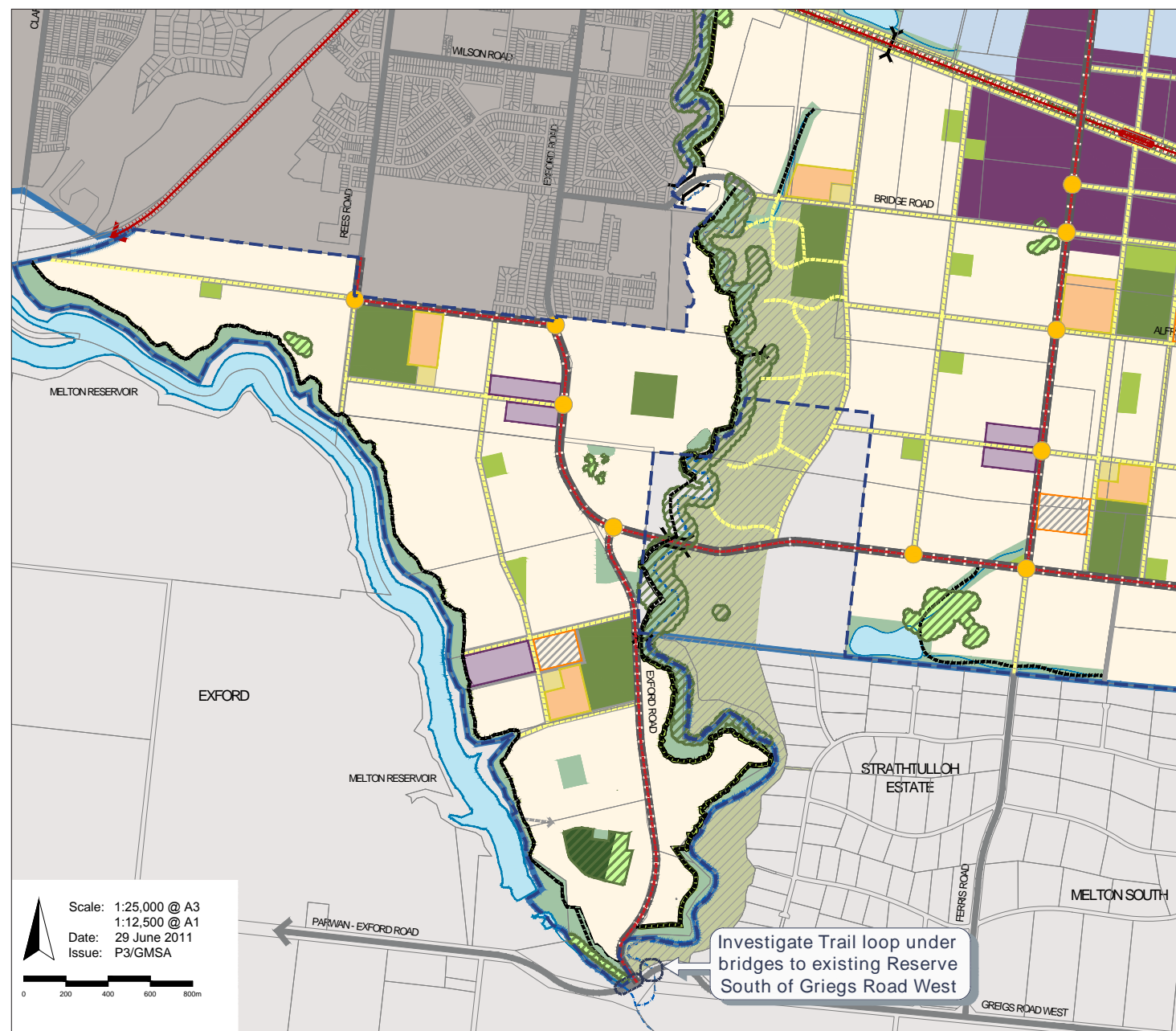


Fig. 1: Walking and Trails Plan. Source: Toolern Precinct Structure Plan, 2011, p62

### Scenic Botanica Landscape Master Plan (CJ ARMS Landscape Architecture, 2021)

The Scenic Botanica Landscape Master Plan is a 10 stage residential development proposal located along Clarke's Road, Brooklyn Road, and the Melton Reservoir. Along the Melton Reservoir interface, a 3 metre wide shared path is proposed. At the south-east boundary of the development site, the shared path stops and is required to continue into the neighbouring parcel.



Fig. 2: Endorsed Landscape Master Plan. Source: Scenic Botanica Landscape Master Plan, 2021, p1



The Werribee River Shared Trail Strategy (Hansen Partnership, 2013)

The Werribee River Shared Trail Strategy identifies opportunities for broader community and tourism benefits including infrastructure such as trail links and formal access to the Werribee River. The strategy recommends that the shared path is a 3 metre wide reinforced concrete trail of 250mm depth on crushed rock with 0.5 metre wide grassed runoff either side.

Linking the Melton Weir Parklands to the Werribee River Trail will provide opportunities as a recreational role in the broader metropolitan trail network.

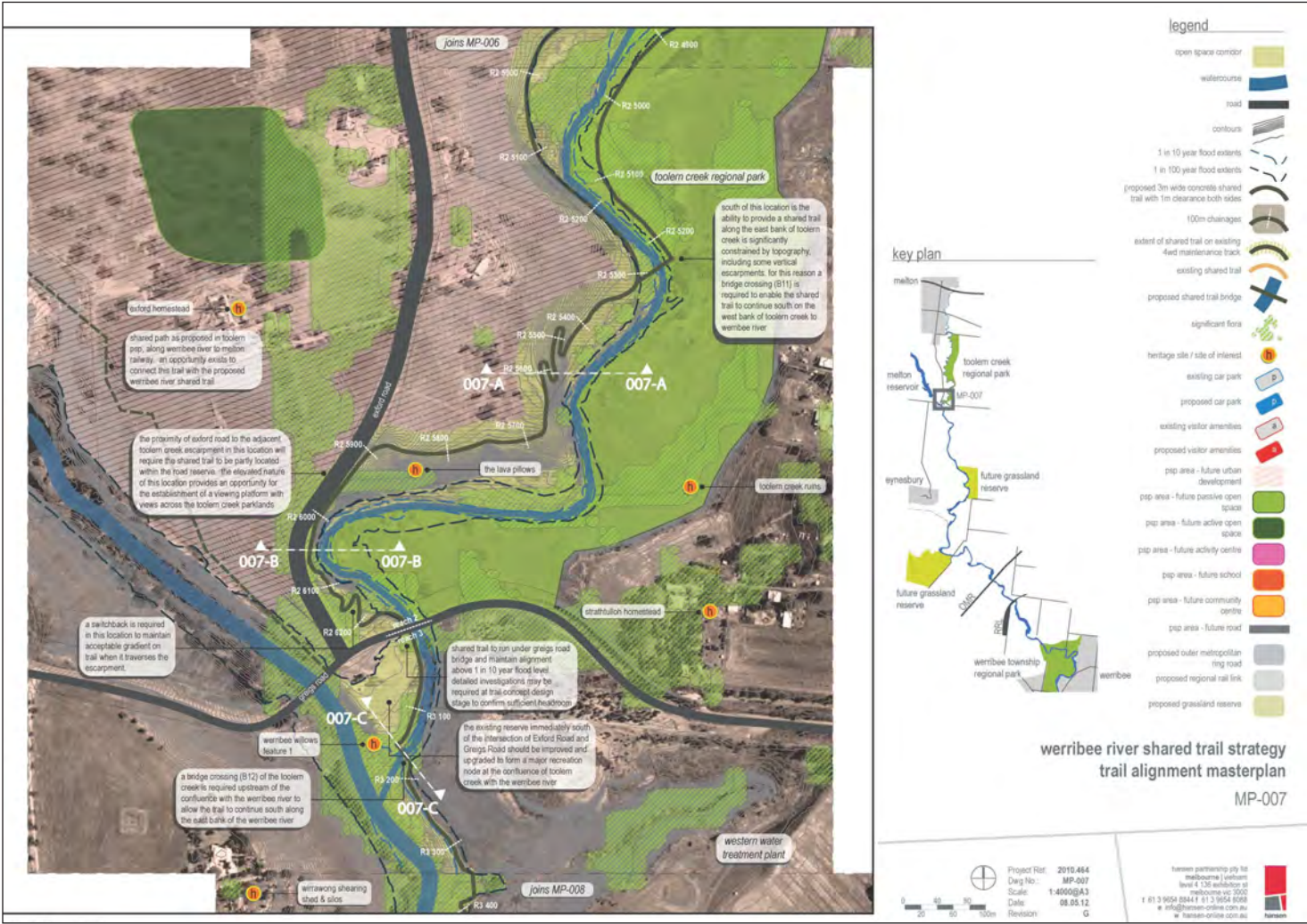


Fig. 3: Trail Alignment. Source: Werribee River Shared Trail Strategy, 2013, p52

Victorian Recreational Boating Strategy 2021 – 2030 (Better Boating Victoria, 2021)

This strategy sets out a number of objectives aiming to improve the maintenance of public facilities, renewing and building new boating facilities, improving access and navigation and investing in destination locations. The strategy identifies Melton Reservoir as a potential location for new boating facilities. Boating facilities considered include boat ramps, pontoons and jettys, car and trailer unit parking and lighting.

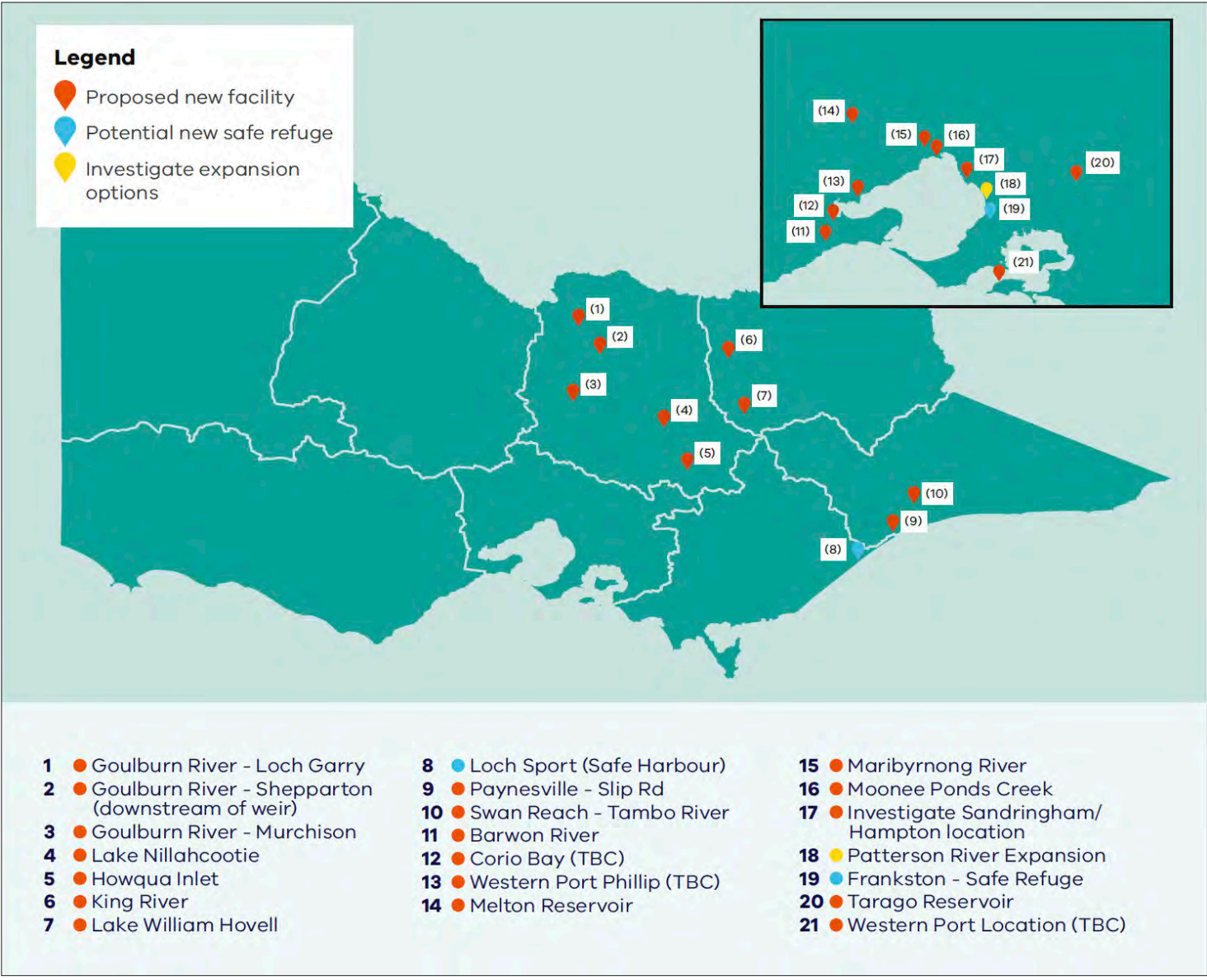


Fig. 4: A map showing potential new boat launch facilities across Victoria. Source: Victorian Recreational Boating Strategy 2021 – 2030 , 2021, p33



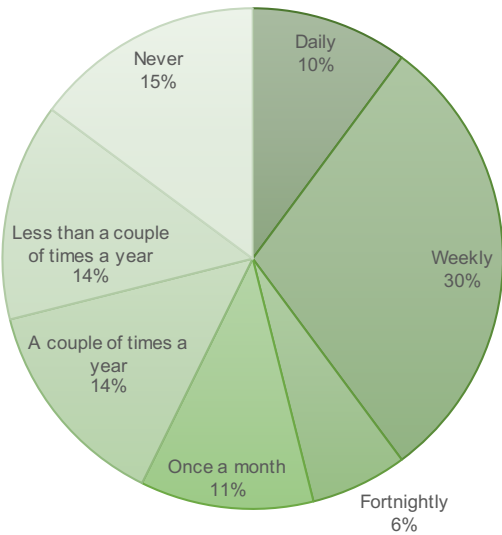
# Appendix B: Consultation Summary

The following table provides a summary of key findings, comments or suggestions from initial consultation with key stakeholders as part of the Parklands Plan

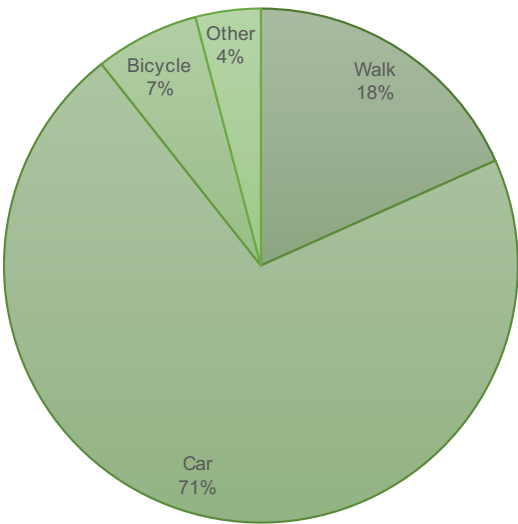
Between 24 April and 2 June 2023, Melton City Council conducted community engagement for the Melton Weir Parkland Strategy.

Feedback was collected via an online survey, accompanied by a hard copy flyer which was dropped off to residents within a 400m radius of the reservoir. In-person consultation was held at the lookout shelter at the end of Rees Road, Weir Views on the 13 May 2023 with approximately 40 people attending. There was a total of 1031 online views and 387 responses were received. 172 respondents registered for future updates via email. Below is a summary of the feedback received. This feedback helps Council to understand what is important to the community.

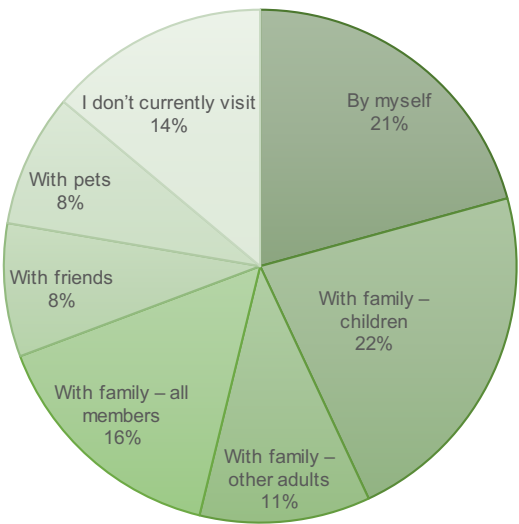
How often do you currently visit the open spaces with the Melton Weir Parklands?



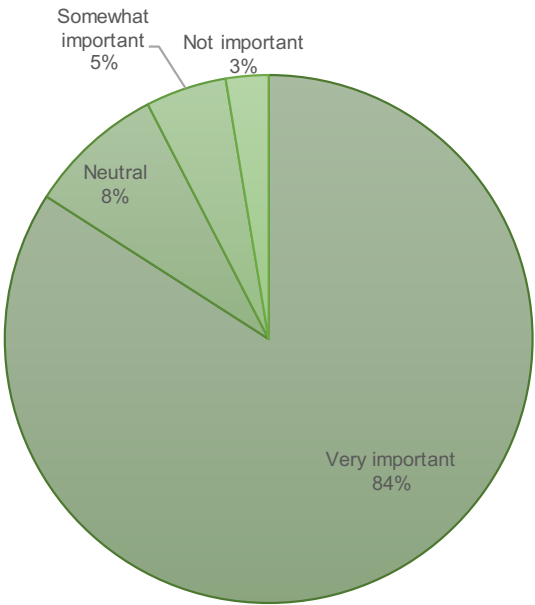
How do you travel there?



Who do you currently visit The Melton Weir with on most of your visits?



How important are large parks and open spaces along natural waterways to you?



# Melton Weir Parklands

## INFORMATION SESSION

**WHEN:** Saturday 13 May, 10am-1pm

**WHERE:** Marriott Boulevard (picnic shelter near Shackell Street intersection), Weir Views

**HAVE YOUR SAY:** Tell us how you would like to use the open space along the Melton Weir and Reservoir

Visit: [Conversations.melton.vic.gov.au/Melton Weir](https://conversations.melton.vic.gov.au/MeltonWeir) or call us on 9747 7200



**Interpreter service:**  
Call 13 14 50 and ask to be put through to Melton City Council on 9747 7200.



## Have your say!

Help us develop a strategy to improve the parklands along the Melton Weir and Reservoir.

We're considering ways to linking hectares of open space, connect more people to the water and parklands, and make the most of the natural setting.

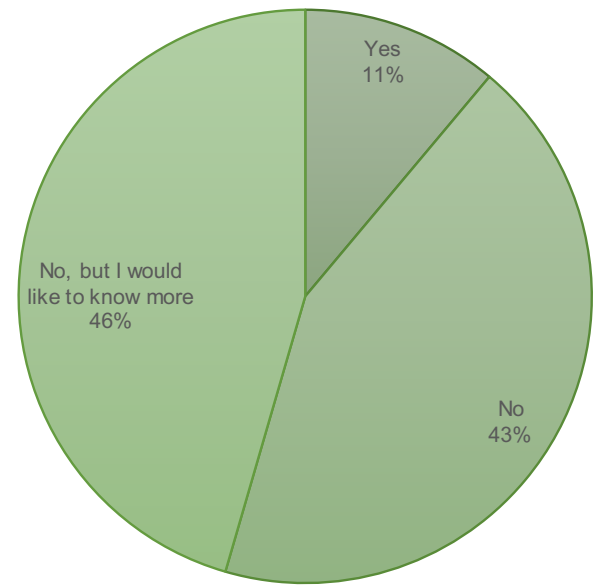
Complete the online survey and let us know how you would like to use the open space along the Melton Weir and Reservoir.



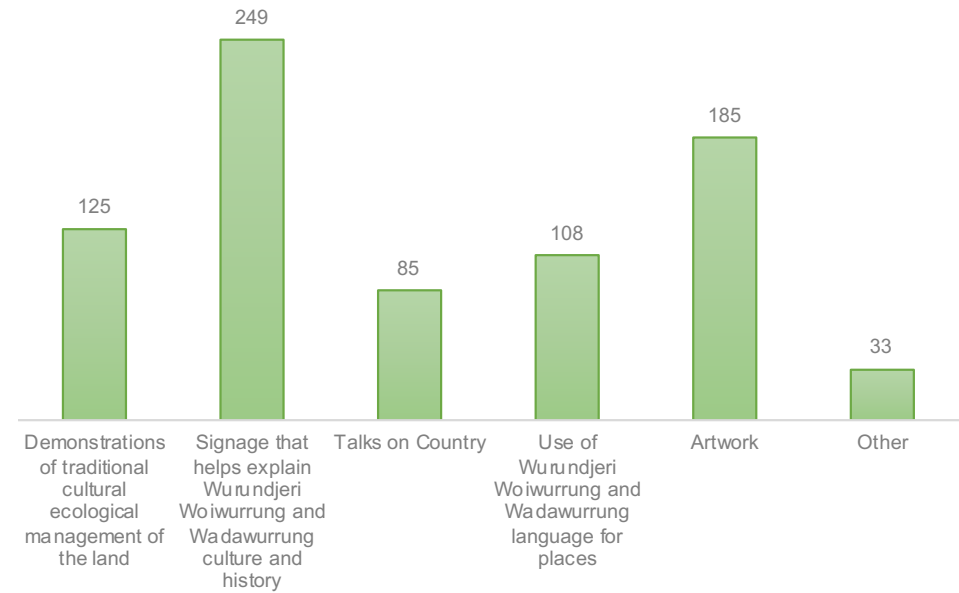
Scan the QR Code



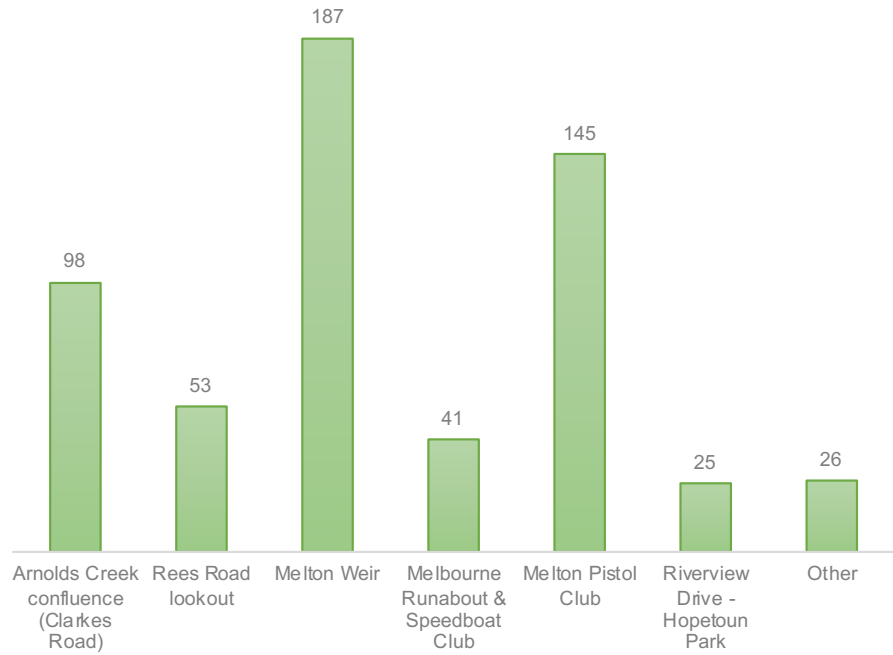
Do you know much about the cultural heritage and history of Melton Weir Parklands area?



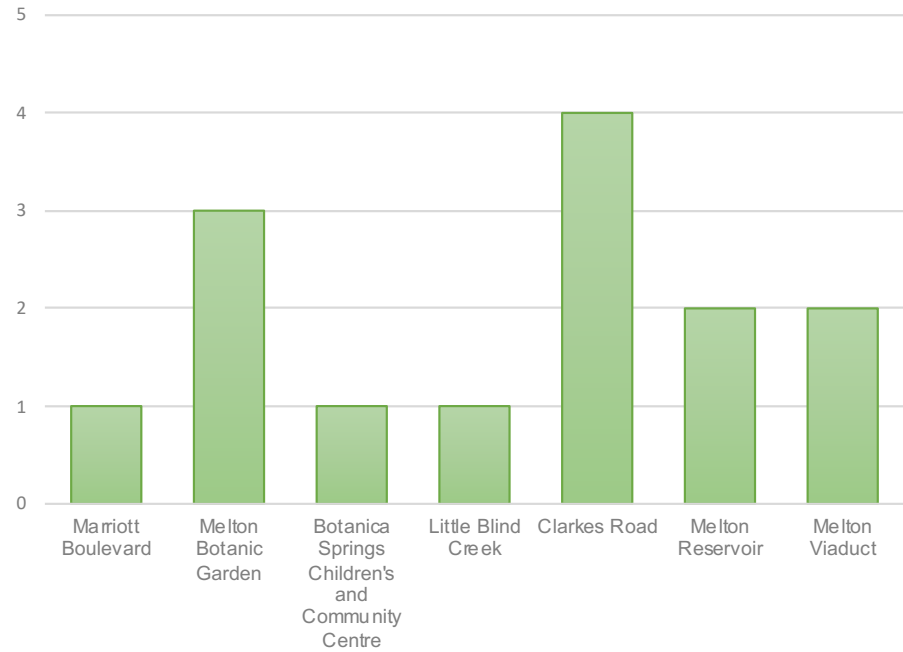
The Melton Reservoir is a boundary between the Wurundjeri Woiwurrung people to the east, and the Wadawurrung people to the west. How would you like learn to learn more about Wurundjeri Woiwurrung and Wadawurrung cultural values in the parklands? (You can choose more than one)



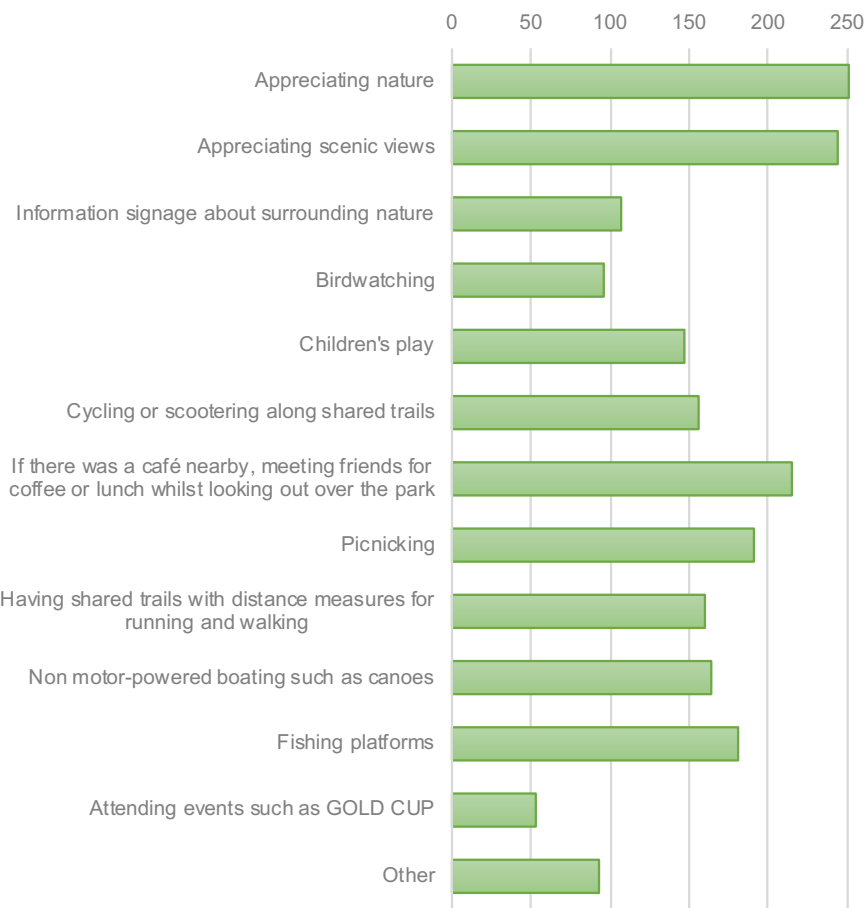
Which areas do you visit? (You can choose more than one)



If other, please specify



What activities would you enjoy doing in Melton Weir Parklands? (You can choose more than one)



If other, please specify

