



T.C.L

# LAKE CAROLINE DRAFT MASTER PLAN & ACTIVATION STRATEGY

MARCH 2024



© 2024 Taylor and Cullity Pty Ltd  
 ABN 73 006 128 963

The information contained in this document is confidential and may be legally privileged. Any use, dissemination, distribution or reproduction of this content is prohibited.

All photographs, images and diagrams are credited to TCL unless specified.

#### Melbourne

*T +61 3 9380 4344  
 E melb@tcl.net.au  
 W tcl.net.au*

*385 Drummond Street,  
 Carlton 3053*

#### Adelaide

*T +61 8 8223 7533  
 E ade@tcl.net.au  
 W tcl.net.au*

*109 Grote Street,  
 Adelaide 5000*

#### Sydney

*T +61 4 9945 6077  
 E syd@tcl.net.au  
 W tcl.net.au*

*117 Reservoir Street,  
 Surry Hills 2010*

#### Brisbane

*T +61 4 9847 4461  
 E bris@tcl.net.au  
 W tcl.net.au*

*PO Box 405  
 Greenslopes 4120*

#### Darwin

*T +61 4 9888 0285  
 E darwin@tcl.net.au  
 W tcl.net.au*

*Level 16, 19 Smith  
 Street,  
 Darwin 0800*



T.C.L

### Project Team

City of Melton engaged TCL to lead the Project Team to develop the Lake Caroline Master Plan and Activation Strategy.

City of Melton Project Leads include:

Adrian Cope  
 Jeanette Simson

TCL Project Team includes:

Lisa Howard  
 Iris Fong  
 Lex Segal


The project team wishes to acknowledge the contribution and assistance from the following:

- Members of the Project Working Group - comprised of City of Melton staff and TCL
- Councilors of Melton City Council
- Community and stakeholder group representatives who gave their time and knowledge during consultation phases
- Authors of the many background reports on the Lake and its surroundings

### REPORT TITLE

Rev	Date	Purpose
01	23.02.2024	For Review
02	18.03.2024	For Review



An aerial photograph of a landscape, likely a reserve, with a blue overlay. The image shows a winding river or road, a small lake, and various land parcels marked with white crosses. The text is overlaid in white, italicized font.

*We acknowledge the Traditional Owners and custodians of this land, the Wurundjeri People on which Lake Caroline Reserve is located.*

*We respect their continuing connection to land, waters, and culture and recognise that sovereignty has never been ceded. We pay our respects to Elders past, present and emerging.*







# TABLE OF CONTENTS

1.0 Introduction	6
2.0 Site Context	8
3.0 Issues & Opportunities	22
4.0 Consultation & Engagement	26
4.1 Approach	27
4.2 Outcome	29
5.0 Vision & Principles	34
5.1 Principles & Key Moves	35
5.2 Testing Scenarios	36
6.0 Master Plan	40
7.0 Activation Strategy	58

Appendices





# 1 INTRODUCTION



# 1.0 INTRODUCTION

The Lake Caroline Master Plan and Activation Strategy was commissioned by City of Melton at the end of 2022. It was a response to ongoing feedback from the local community around a number of recurring themes and issues of the Lake Reserve Precinct.

Lake Caroline Reserve is one of the most significant open spaces in the Caroline Springs area, and attracts both locals and residents from all around the City of Melton. Lake Caroline is an artificial waterbody, and was created as part of the Delfin Caroline Springs submission in the early 2000s. The Reserve is valued for its amenity, generosity of open space and ecological value.

Since the recent COVID-19 Pandemic, a number of regular events and attractions around the Lake Precinct have ceased to exist, and Council and the community are seeking ways to reactivate.







## 2 SITE CONTEXT



## 2.0 SITE CONTEXT

The City of Melton is one of metropolitan Melbourne's outer west councils - it covers a vast 528 square kilometers and is one of the fastest growing municipalities. Caroline Springs is 31km from the Melbourne CBD and lies on the far east of the Council boundary.

Lake Caroline is sited in the heart of Caroline Springs, adjacent to the main civic and shopping precinct.





## 2.1 HISTORICAL CONTEXT

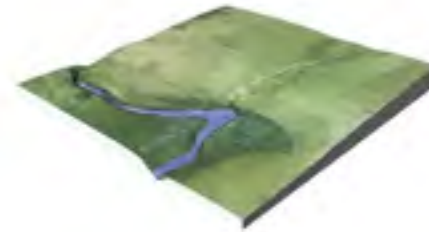
The land, where the Lake sits, locates within the Traditional Country of the Wurundjuri Woi Wurung People of the Eastern Kulin Nation.

The region was primarily a grazing area since Colonisation. In 1999, Caroline Springs was developed as part of the greenfield development by Delfin. Lake Caroline was conceived as a magnificent artificial recreational lake, acting as the centerpiece of Caroline Springs Town Center.

In 2005, the construction of Caroline Springs was underway, with many of the roads and the Lake near completion. The Town Center, including Lake Caroline, the shopping district, and much of the residential areas had been completed in 2009, with the suburb completed in full in 2013.

Since its completed construction, Caroline Springs has been thriving, being home to more than 20,000 people. It is expected to continue to grow and expand, which puts pressures on the supply of quality public open space.

Before Colonisation



1948



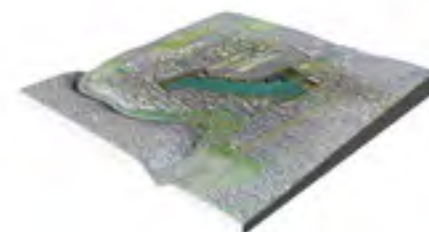
2005



2009



2022



Caroline Springs Region with current boundary of Lake Caroline shown as red dashed and Kororoit Creek visible to the south, 1948. (Source: Department of Lands and Survey, Aerial Survey of Victoria)



View north towards future Caroline Springs Town Center and Lake Caroline, with Kororoit Creek in foreground, 1962 (Source: Ian Harrison)



## 2.2 EXISTING LAND USE CONDITION

Lake Caroline is located within the Town Center of Caroling Springs, adjacent to CS Square and a number of public and commercial facilities. This includes Caroline Springs Library , Caroline Spring Police Station and Mecure CS and Westwaters Hotel. Lake Caroline is also in close proximity of a number of schools, making the Lake a popular hanging spot for students.

Public Art '*Rhythm and Seed*'

Public Art '*Words for Water*'

CS War Memorial

Public Art '*On Tap*'

### LEGEND

- Commercial / Hospitality
- Educational
- Institutional
- Waterbody / Waterway
- Open Space / Reserve
- Feature of Interest





## 2.3 LANDSCAPE

Lake Caroline is a composite reserve itself, which comprises three open spaces: Lake Caroline Reserve, Boathouse Reserve and Lake Caroline Waterfront.

The Lake is surrounded by a ring of landscape reserves and open spaces, including both native landscape and designed landscape, which presents opportunities to strengthen connection among these open spaces.

Some noticeable landscapes include: Themada Grassland, located on the northeast to the Lake, is a remnant landscape of Natural Temperate Grasslands of Southern Volcanic Plain; The Urban Wetland and The Cascade, located on the upstream of the Lake, are designed open spaces to facilitate the overall wetland system.

Lake Caroline is in close proximity to Kororoit Creek, connected via a small open space known as Lake Caroline Spillway.

## LEGEND

- Passive Open Space / Reserve
- Active Open Space
- Waterbody / Waterway
- Existing Tree



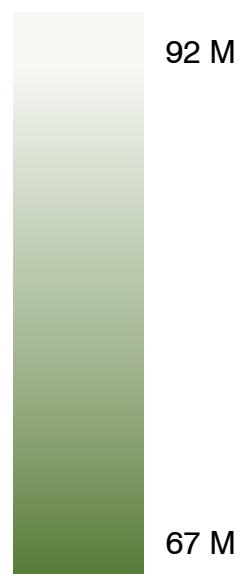


## 2.4 TOPOGRAPHY

The overall topography of Caroline Springs is measured between 92m to 67m above sea level, with the lowest point being Kororoit Creek.

The immediate surrounding of Lake Caroline is relatively flat, with a steeper fall observed on the southern side of the Lake. The depth of the Lake ranges between 0.4m to 2m.

### LEGEND





## 2.5 HYDROLOGICAL SYSTEM

Lake Caroline is the main retention water body of Caroline Springs, with an area of 7.49 ha. It is part of the greater water system, connected to the Cascade and Urban Wetland upstream and Kororoit Creek downstream through the Spillway. Stormwater from the surrounding area is collected and discharged into the Lake.

Lake Caroline also serves as a reservoir, providing irrigation water to the adjacent open spaces and sportsgrounds.

Water Reticulation System  
Pump  
Fountain

### LEGEND










-  Drainage Connection (Underground - dashed)
-  Surface Runoff
-  Water Inlet / Outlet
-  Drainage System Feature
-  Wetland / Spillway
-  Retention Pond
-  Lake Wall
-  Main Prevailing Wind - Summer
-  Main Prevailing Wind - Winter

Image caption






## 2.6 ECOLOGY

Caroline Springs and Lake Caroline are located on Western Volcanic Plains, which is historically dominated by grasslands with scattered trees. A number of key ecological habitats have been identified, including Themeda Grasslands, Lake Caroline and Kororoit Creek.

Themeda Grasslands is part of Natural Temperate Grasslands of Southern Volcanic Plain, as defined by Australian Government Department of Climate Change, Energy, the Environment of Water.

Fauna sighted in this region include (but not limited to): Eastern long-necked turtle (*Chelodina longicollis*), Black Swan (*Cygnus atratus*), Eastern Grey Kangaroo (*Macropus giganteus*), Growling Grass Frog (*Ranoidea rabiforis*), Common Eastern Froglet (*Crinia signifera*), Eastern Banjo Frog (*Limnodynastes dumerilii*), Tiger Snake (*Notechis scutatus*), Eastern Brown Snake (*Pseudonaja textilis*).

### LEGEND

-  Habitat - Remnant
-  Habitat - Current
-  Record of Growling Grass Frog (Post 2007)
-  Historical Record of Growling Grass Frog (Prior 2006)





## 2.7 HERITAGE & CULTURAL SENSITIVITY

Lake Caroline and its surrounding sits within the Traditional Country of the Wurundjuri Woi Wurung People of the Eastern Kulin Nation.

Kororoit Creek and its proximity are identified as areas of Aboriginal Cultural Heritage Sensitivity as specified in Division 3, Part 2 of the Aboriginal Heritage Regulations 2018. This area is either known to contain, or are likely to contain Aboriginal cultural heritage places and objects.

### LEGEND

 Areas of Aboriginal Cultural Heritage Sensitivity





## 2.8 Trail Network

Lake Caroline is highly accessible by foot and bicycle. The Lake itself provides a 1.8km shared circuit for pedestrian and cyclists, allowing visitors to move around within the parkland.

Lake Caroline is connected by a number of existing cycleway and footway, which further leads to Kororoit Creek Trail. To further improve the accessibility, a number of proposed cycleway network and pedestrian network are identified in *Moving Melton - Melton Integrated Transport Strategy* (2015). Caroline Springs Town Center is designated as a Pedestrian Priority Area, with its future development centered around walking and cycling activities.

Future Caroling Springs Boulevard  
 Pedestrian Crossing (due 2024)  
 Signals (due 2026)

### LEGEND

- Kororoit Creek Trail
- Cycleway
- Footway
- - - Proposed Cycleway Network
- - - Proposed Pedestrian Network
- Pedestrian Priority Area
- Future Works





## 2.9 PUBLIC TRANSPORT

Lake Caroline is accessible by Public Transport Victoria bus on its northern, eastern and western interface.

The nearest train station is Caroline Springs Railway Station, providing Ballarat V/Line rail service. The train station is 3.46km south to the Lake and is connected to the Town Center via bus service.

It is worth noting that there is a large carpark in CS square, providing 1,200 free car parking spaces and making cars a more preferred transportation when visiting Lake Caroline.

### LEGEND

- Major Vehicular Corridor
- PTV Bus Route
- PTV Bus Stop





## 2.10 CURRENT CONDITION

A detailed mapping has been undertaken to document the existing furniture, facilities, amenities and material of Lake Caroline Reserve, Boathouse Reserve and Lake Caroline Waterfront to assist assessment on issues and opportunities.





## 2.11 FURNITURE & MATERIALS

A photo inventory has been undertaken to document the existing furniture, facilities, amenities and material of Lake Caroline Reserve, Boathouse Reserve and Lake Caroline Waterfront.



Seating



Doggy Bags



Drinking Fountain



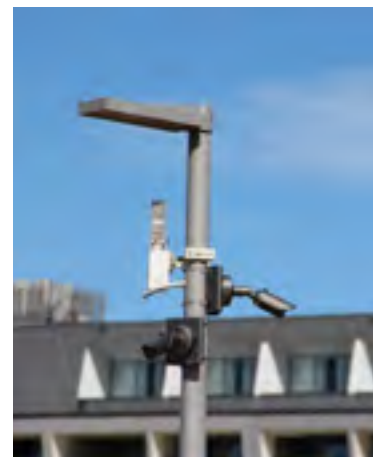
Barbecue and Seatings



Timber Deck Pier



Fitness Equipment



CCTV & Light Post



Rubbish Bin



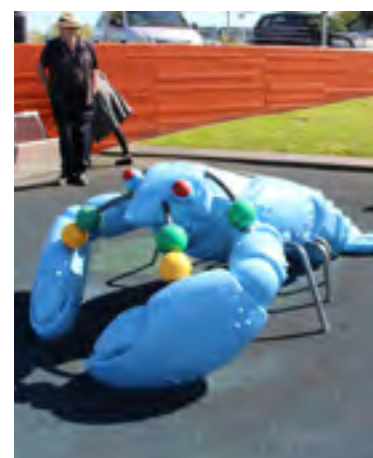
NW - Lake Street Interface



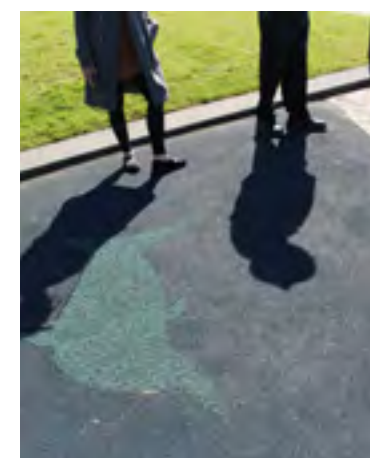
NW & NE - Lake Street Interface



Signage



Playground  
(near Lake Street)



Existing Softfall Condition



Prints on Ground



Table Tennis Table









# 3 ISSUES & OPPORTUNITIES



## 3.0 ISSUES & OPPORTUNITIES

### 3.1 INTERFACE

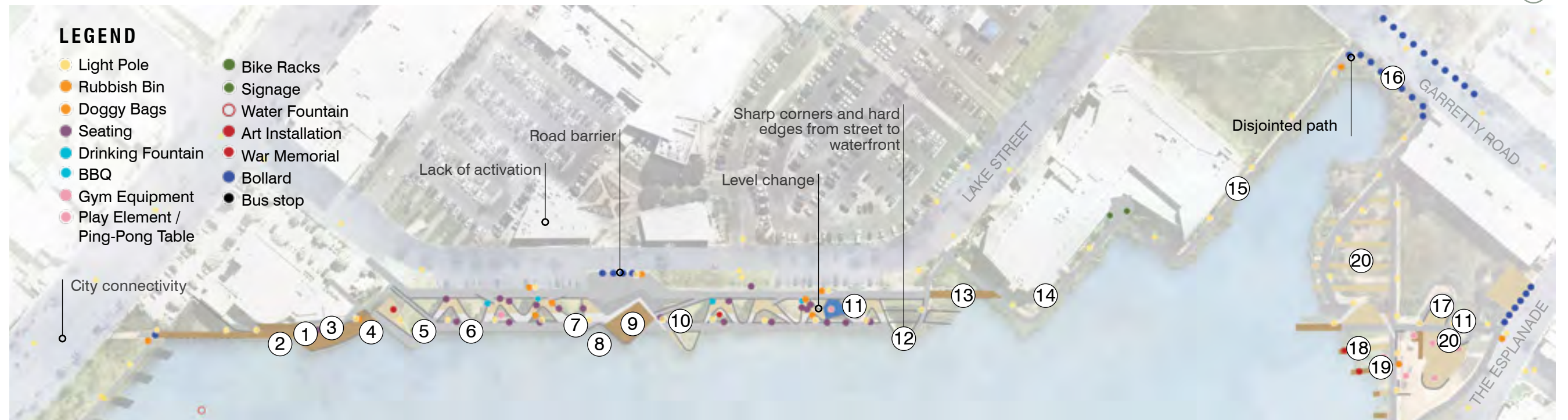
Lake Caroline, including Lake Caroline Reserve, Boathouse Reserve and Lake Caroline Waterfront, are divided into interfaces to allow in-depth analysis and assessment of issues and opportunities, and assisted by multiple on-site observation.

Northern interface includes the majority of Lake Caroline Reserve and Boathouse Reserve. Southern Interface includes Lake Caroline Waterfront and its connecting interface with Lake Caroline Reserve.





### 3.2 NORTHERN INTERFACE



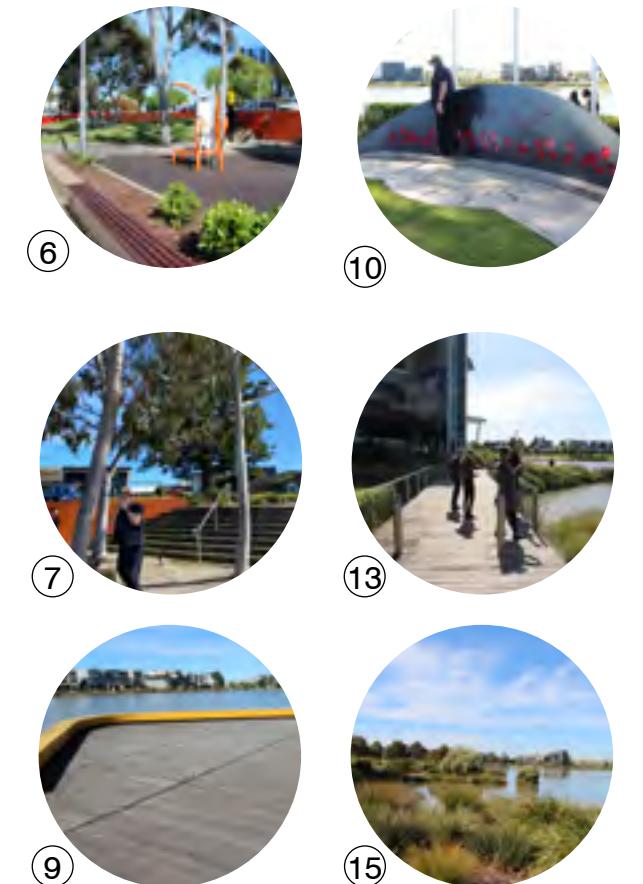
#### ISSUES

- ① Boardwalk weathered and degraded
- ② Food & Beverage businesses do not engage with the lake
- ③ Lack of seating
- ④ Material discontinuity
- ⑤ Space constraints shared pedestrian and cyclist path close to waters edge
- ⑫ Hard edges with degrading surfaces
- ⑯ Lack of wetland management
- ⑰ Underutilised playground area
- ⑱ Deck Jetty weathered and degraded
- ⑳ Lack of shade



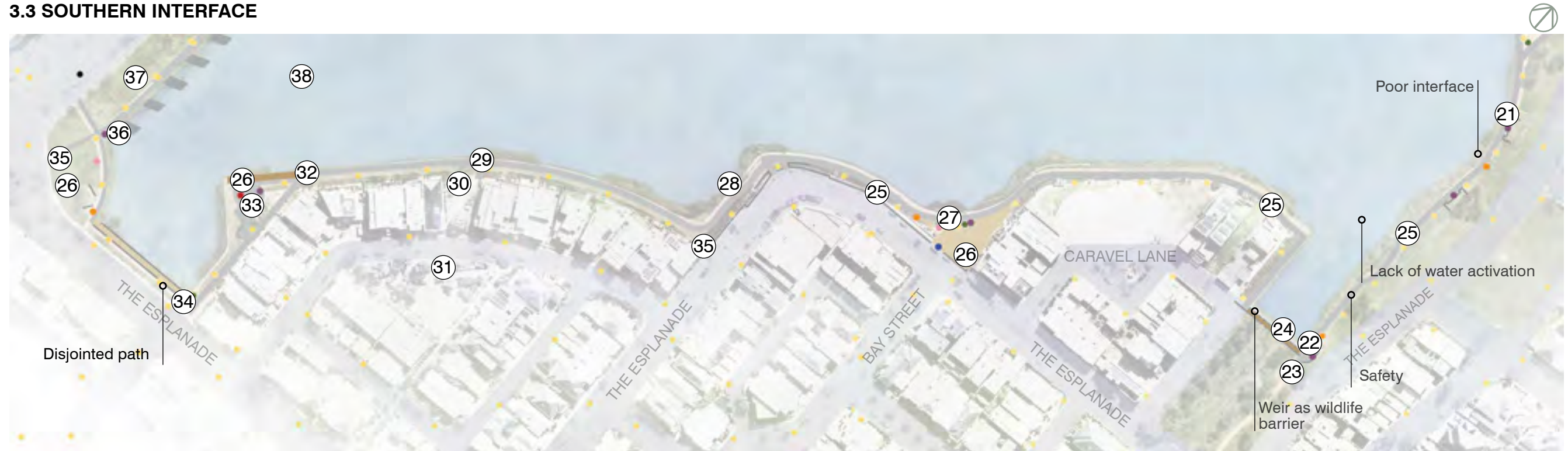
#### OPPORTUNITIES

- ⑥ Space for upgrading fitness equipment
- ⑦ Pedestrian activation opportunity from Lake Street to waterfront
- ⑨ Upgrade and more events for existing activity hotspot
- ⑩ Retain and celebrate existing memorials
- ⑪ Update play elements
- ⑬ Existing boardwalk
- ⑭ Business opportunities to engage with the Lake
- ⑮ Expand on existing wetland planting for habitat



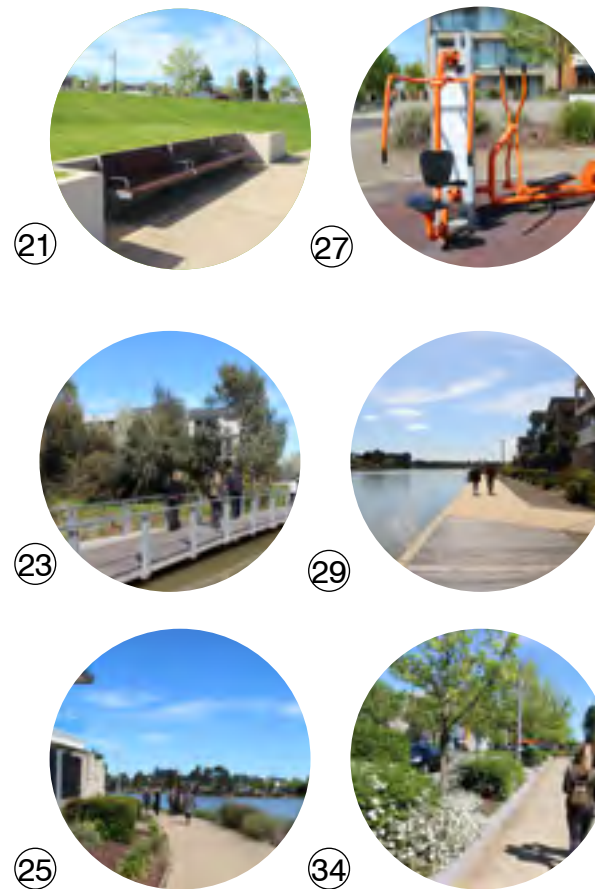


### 3.3 SOUTHERN INTERFACE



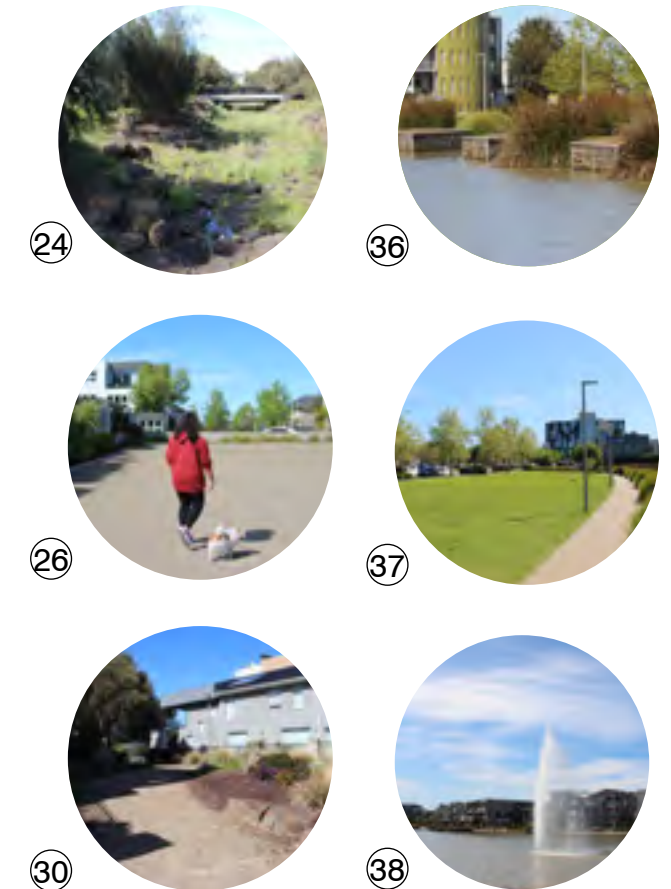
#### ISSUES

- ②① Insufficient seating in area that does not connect to the surrounds
- ②② Wayfinding issue due to material discontinuity
- ②③ Lack of connection to Kororoit creek
- ②⑤ Lack of shade
- ②⑦ Limited existing gym facilities
- ②⑨ Lack of seating along walkway
- ③② Material discontinuity and degradation
- ③④ Multiple pathways with confusing wayfinding
- ③⑤ No pram crossing for users



#### OPPORTUNITIES

- ②④ Spillway always being dry, opportunity for upgrading water filtering biodiversity potential.
- ②⑥ Opportunity for activation, currently dead space
- ③⑦ Better visual cue to hint access to other open space
- ③① Connect to other existing open space to create a parkland system
- ③⑥ Habitat improvement and educational opportunity
- ③⑦ Better amenities for picnic on lawn
- ③⑧ Opportunity for more water display, water features and filtering system to improve water quality and attractions







# 4 CONSULTATION & ENGAGEMENT



## 4.0 CONSULTATION OVERVIEW

### 4.1 APPROACH

Lake Caroline is a major attraction in Caroline Springs located north of Kororoit Creek. The lake holds significance to the local community. Members of the local community and key stakeholders have expressed the need for a Master plan to outline the priorities and key design features of the Lake's future.

The Project Team acknowledge it is important to consult, listen and learn about the community and stakeholders' opinions and knowledge of the Lake.

Key insights from engagement with the public and key stakeholders are outlined from information provided in one on one interviews with key stakeholders, submissions to City of Melton's Caroline Springs Master plan Survey and on-site community consultation sessions.

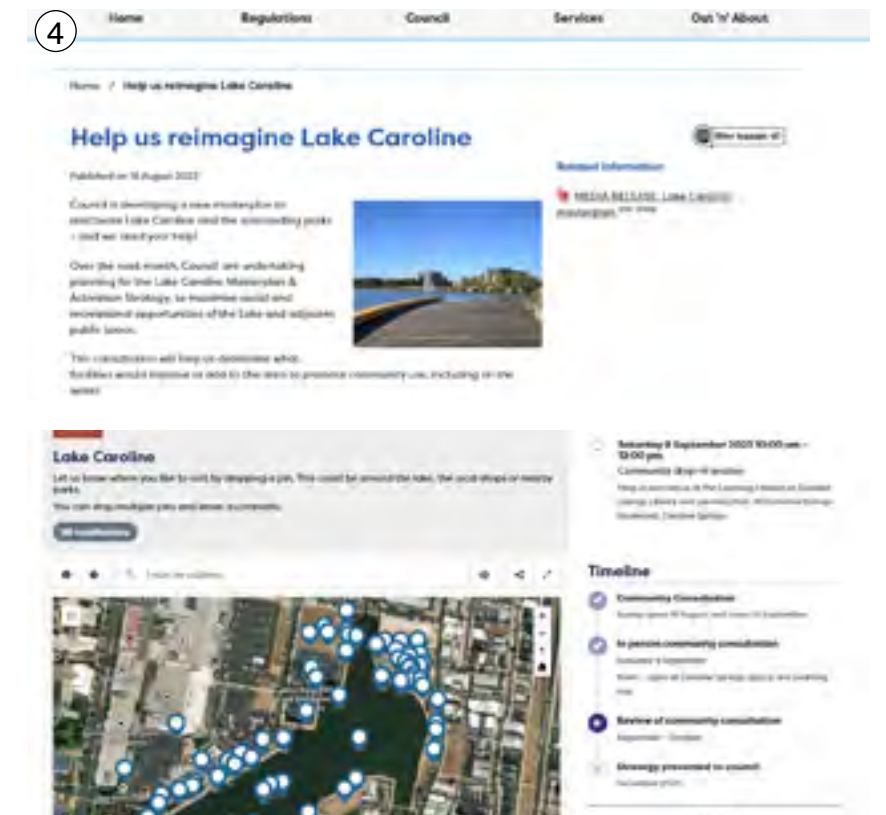
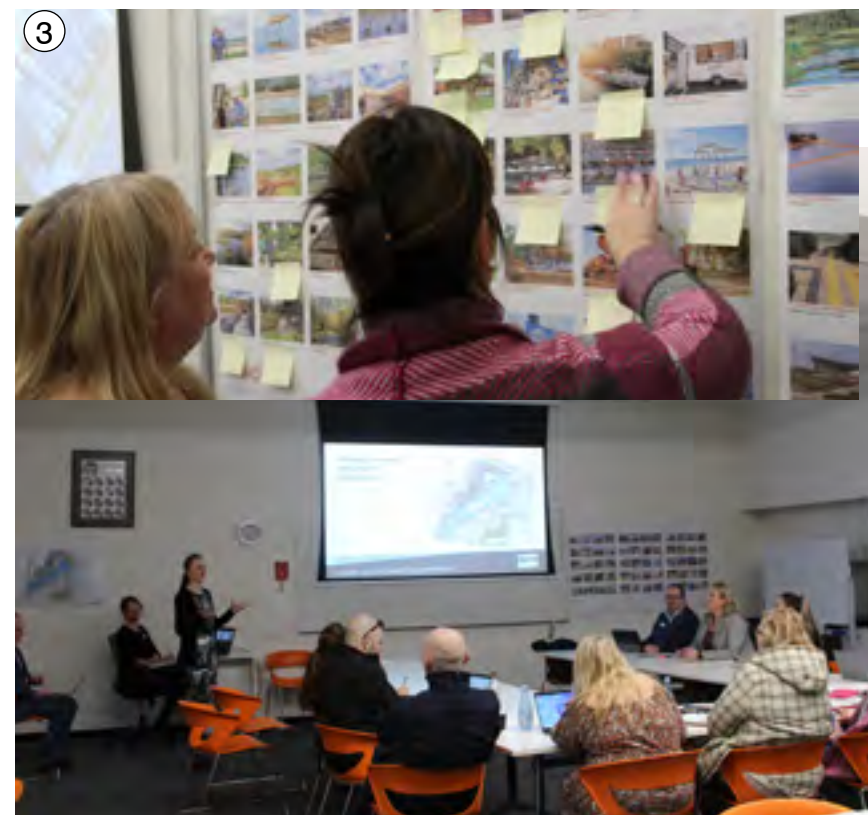
Thorough community consultation ensures the Project Team can create a balanced response to local and stakeholder desires.





## CONSULTATION SNAPSHOTS

- ① Intercept Interviews at CS Square, 08.09.2023.
- ② Community Drop In Session at Caroline Springs Library, 09.09.2023.
- ③ Councilors Workshop at Caroline Springs Library, 12.07.2023.
- ④ Online Community Consultation at Melton Consultation [Screenshot], 15.08.2023 - 17.09.2023.





## 4.2 OUTCOME

As part of the online community consultation, 395 respondents have completed the questionnaire at Melton Consultation website.

## USER OVERVIEW





### KEY THEMES

Community and stakeholder aspirations are focused into key themes that encompass desires for the future of Lake Caroline.

### ACTIVATION

Turning Lake Caroline into a regional destination where the community celebrates and gathers, with LC being the key stage where collective memories form, being the proud of CS and Melton Area

### ECOLOGY

Transform Lake Caroline into a thriving wildlife habitat / haven and a place for close nature encounter and educational opportunities.

### CONNECTIONS

Improving Lake Caroline from being a blue desert, better knitted into the Caroline Springs's urban fabrics and allow better physical and visual access from the surroundings

Some overlapping priorities between council and the public can be seen in the following precedent examples.



Source: Topio

### Public space use

Upgrading the outdoor gym equipment



Source: Sedgemoor Model Boat Club

### Infrastructure and Amenities

Watersport facilities



### Waterplay

Art installation misters



Source: Sydney Park by Turf Design Studio

### Hydrology

Develop the current cascades for better water filtration and aeration



Source: ACT Parks and Reserves

### Education

Provide Information of species and there importance to the Lake



Source: Herald Sun

### Wetland Ecology

Maintain health of current lake ecology



Source: Floating Island International

### Wetland

Floating wetlands



Source: John Gollings

### Education

Incorporate the greater context of wetlands importance



Source: John Gollings

### Water access

Platform and deck connection to wetland



Source: John Gollings

### Stepping Stones

Element of play with water crossing



Source: CRC for Water Sensitive Cities

### Amphitheater and Level Change

Wetland plants integrated into amphitheater



Source: Brighton City Centre, Genl Architects & Landscape Projects

### Pavement and Material Detail

Seamless shared user path for Lake Street



## THINGS COMMUNITY WANTS TO SEE

The following diagram summarises the events, activities and additional facilities the respondents want to see at Lake Caroline.



335 people

Markets on the Lake (Source: St Kilda Esplanade Market)



224 people

Seasonal Celebrations on the Lake (Source: Bonner County Daily Bee)



171 people

Floating Cafes, Restaurants and Waterside Dining (Source: BLU Crabhouse & Raw Bar)



157 people

Rentable Boats (Source: zar 2015)



160 people

Community Exercise Group (Source: NBC News)



## THINGS COMMUNITY WANTS TO SEE



Water Crossing (Source: Melbourne Cairnlea Lake Boardwalk, Hassell)



Festivals including Music, Food and Wine, Film, Light (Source: Melton City Council)



Waterplay Elements (Source: Elizabeth Caruthers Park)



Lighting on the Water (Source: Lake Macquarie City)



Floating Wetlands (Source: Evergreen Brick Works)



## LAKE WIDE INITIATIVES

The initiatives extracted from the consultation can be summarised as follows:

### ACTIVATION

Turning Lake Caroline into a regional destination where the community celebrates and gathers, with LC being the key stage where collective memories form, being the proud of Caroline Springs and Melton Area.

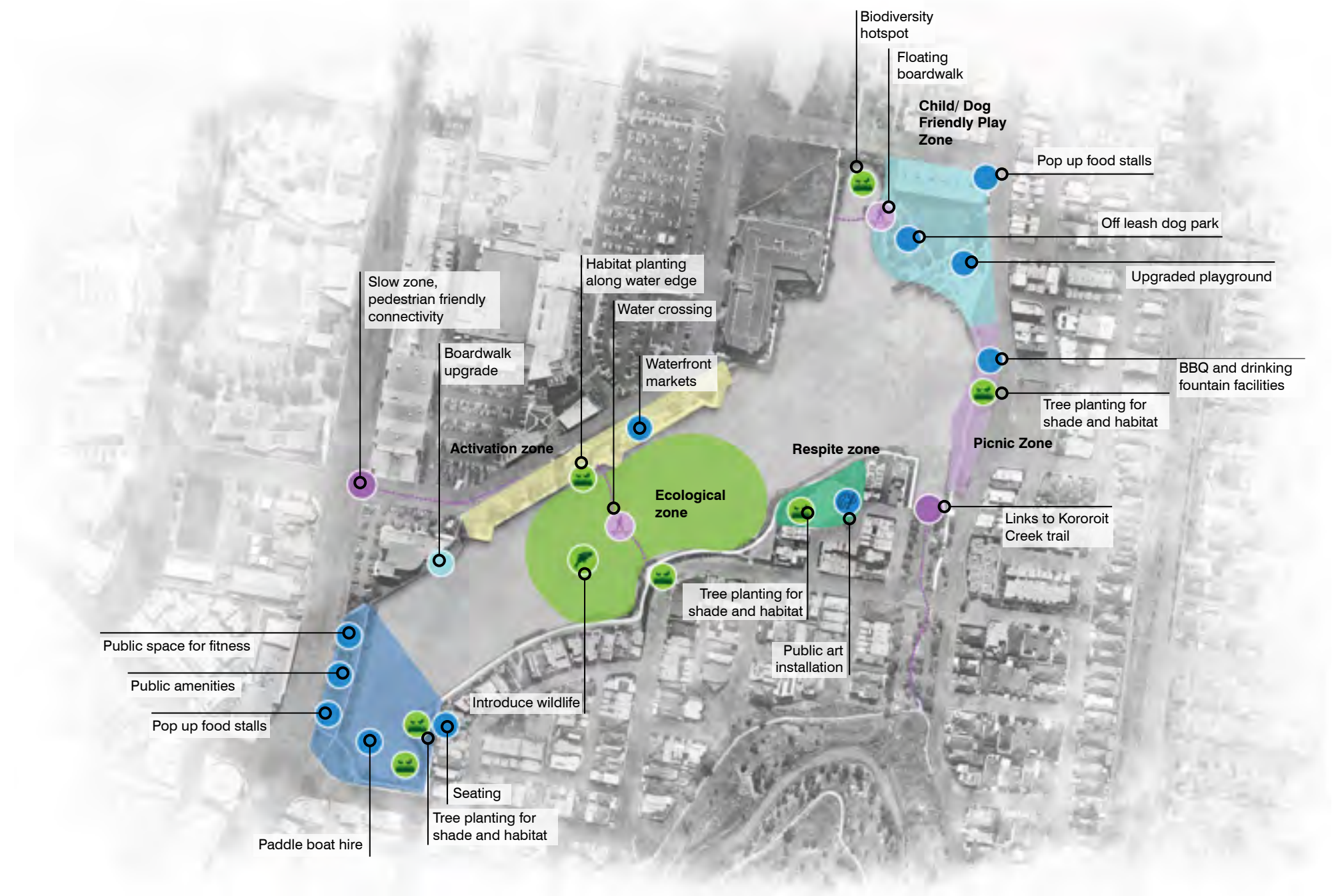
### ECOLOGY

Transform Lake Caroline into a thriving wildlife habitat / haven and a place for close nature encounter and educational opportunities.

### CONNECTIONS

Improving Lake Caroline from being a blue desert, better knitted into the Caroline Springs's urban fabrics and allow better physical and visual access from the surroundings

Some overlapping priorities between council and the public can be seen in the following precedent examples.



*"It would be great to make it a destination that allows you to stay longer after walking around the lake."*

- Survey response from a local resident







# 5 VISION & PRINCIPLES



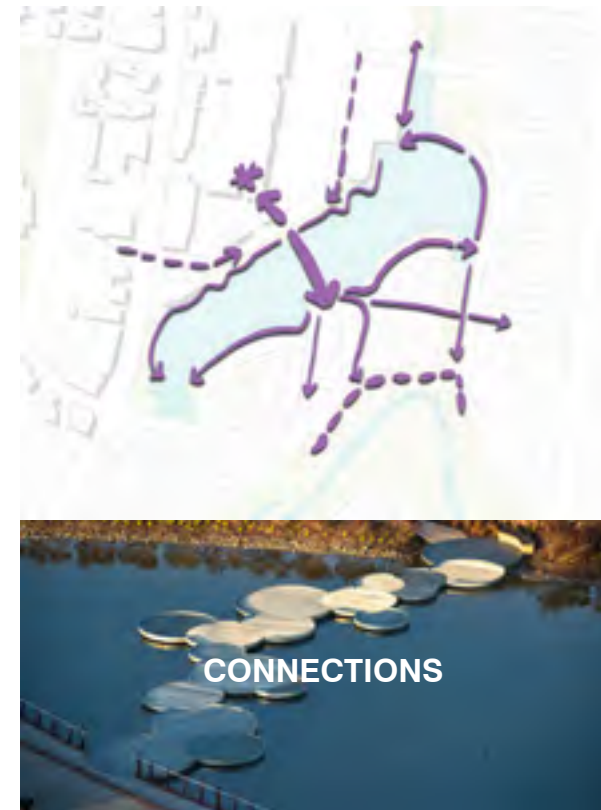
# 5.0 VISION & PRINCIPLES

## 5.1 PRINCIPLES & KEY MOVES

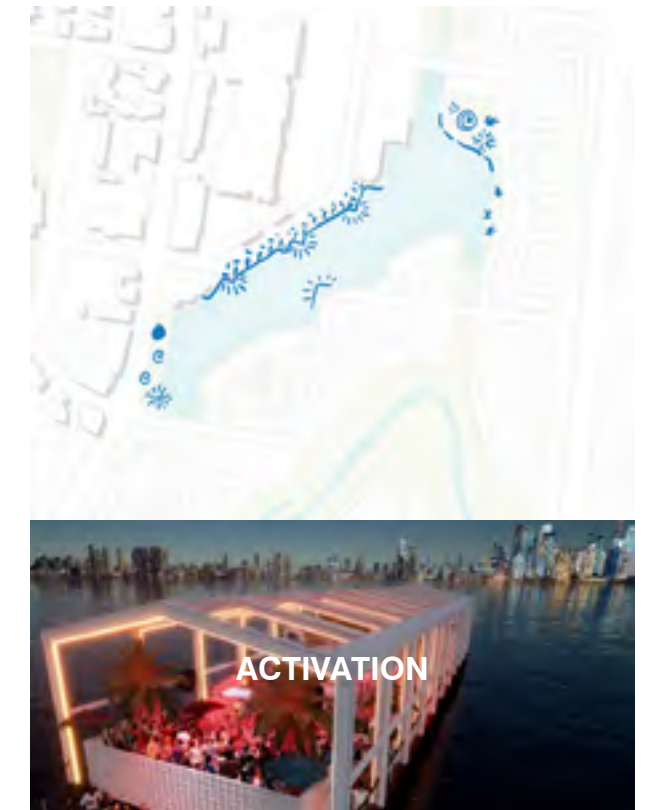
### Site Themes



#### ECOLOGY



#### CONNECTIONS



#### ACTIVATION

### Masterplan Principles

*Create thriving ecological zones that expand upon and connect to existing ecology 'hot-spots' for the community to engage with*

*Facilitate movement around and across the Lake to provide safe connections and links to the broader community and facilities*

*Provide a range of flexible spaces to enable the curation of year-round evening, cultural, events, activities and festivals*

### Key initiatives

1. Connect to the northern ecology cascade and wetland system
2. Lookouts, birdhides and boardwalks
3. Floating Wetlands
4. Connect and expand upon Kororoit Creek green link
5. Enhance and expand southern lake side ecology

1. Mid-lake crossing to connect the south and west of the Lake
2. Lighting and amenity along the south-eastern promenade
3. Shared, slow zone at Lake Street
4. Revisit Western Promenade and connection to Lake Street
5. New Northern Promenade
6. Clear signage & wayfinding

1. Generous event lawn at northern end of Lake
2. Accessible place for Play and Connection
3. Dedicated picnic locations
4. Expanded decking areas for café activation and events
5. Shared zone at Lake Street to enable markets and festivals
6. Viewing areas at key locations around the Lake







### CONNECTION FOCUSED

The objectives for the Connection focussed design included:

- Connecting the Kororoit Creek
- Connecting the Lake Edge with the Water
- Connecting to the Greater Urban Fabric

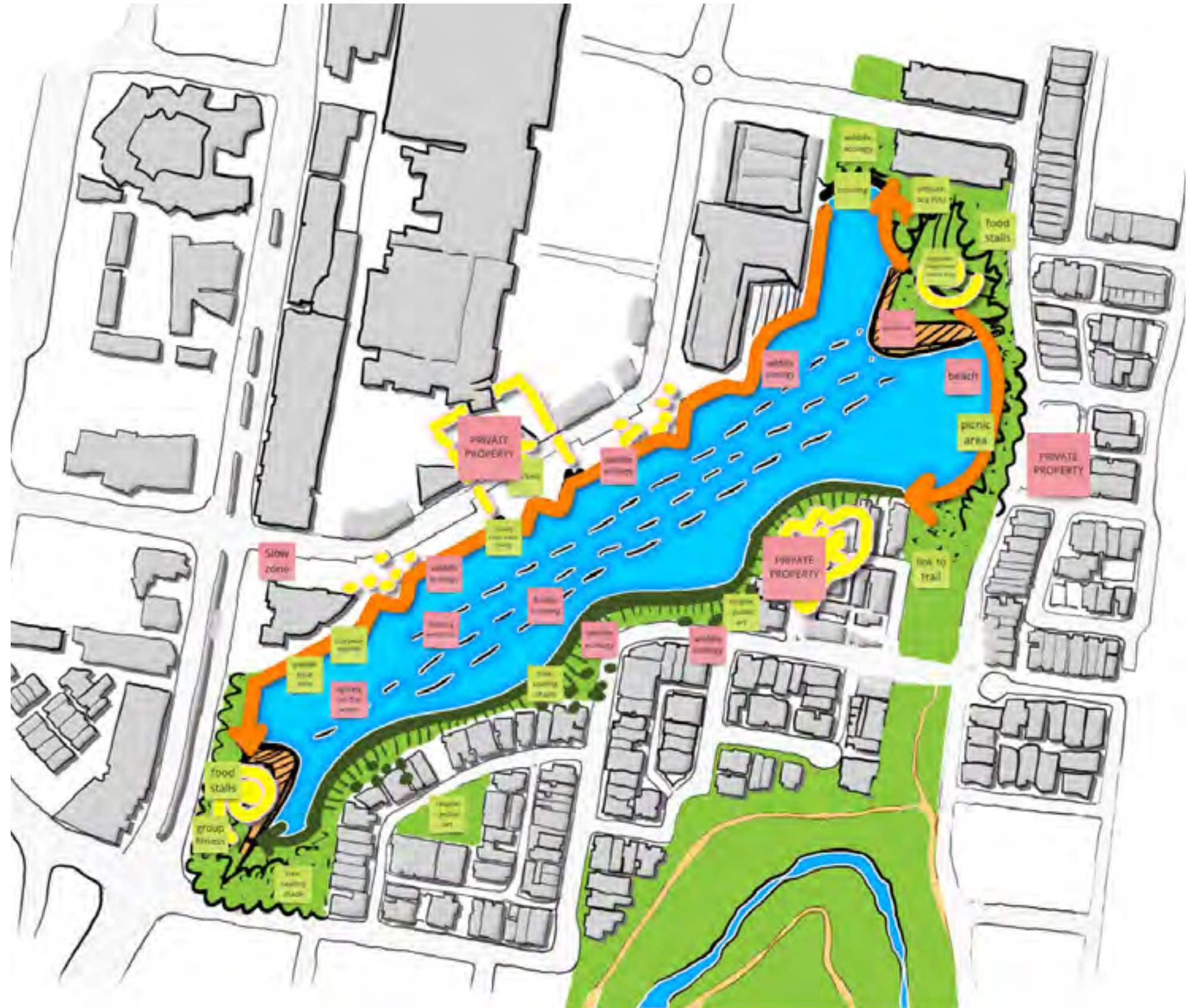




## ACTIVATION FOCUSSED

The objectives for the Activation focussed design included:

- An Unique Events Destination
- An Accessible Place to Play and Connect
- High Interest in Outdoor Cinema and Artificial Beach











# 6 MASTER PLAN



# DRAFT MASTER PLAN PROPOSAL

The overall Draft Master Plan proposes a sequence of large-scale changes and interventions around the precinct. These can be categorised into seven precincts in line with the key themes that have been identified throughout the analysis and engagement phases.





## 6.1 BOATHOUSE EVENT LAWN, PLAY & CAFE

Boathouse Reserve and its surroundings are envisioned as the major activity hub of Lake Caroline of both daily and special occasions, comprising of Boathouse Playground, Boathouse Event Lawn, Boathouse Cafe and Boathouse Pier. The existing public space and infrastructure would be upgraded to accommodate events and festivals of greater scale and variety.

The new accessible Boathouse Playground will be nestled between the Northern Ecology Zones and Northern Promenade. It will better utilise the space for a bespoke playground in combination with significant nature play elements.



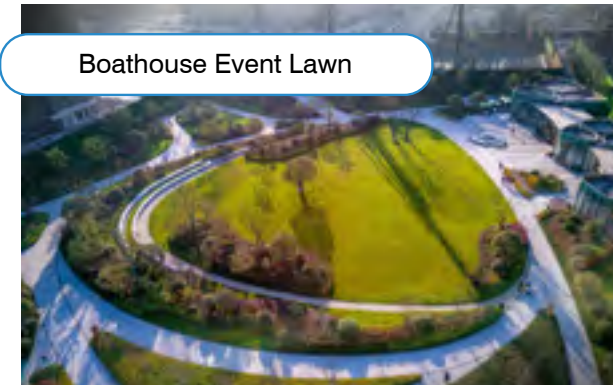
New Boathouse Playground

(Source: Glenthorne National Park Playspace)



Water Play Elements

(Source: Richter Spielgerate)



Boathouse Event Lawn

Pengbu Central Commons by PLAT Studio (Source: PLAT Studio)



Lakeside Alive on Lawn

(Source: Melton City Council)

Sited adjacent to the event lawn and cafe, the playground will better serviced, and framed by garden bed and vegetation. A generous Boathouse Event Lawn will be situated facing south, and gently sloping towards the Lake. Enclosed by garden bed, and canopy trees to the north, the Event Lawn is activated on all edges by the Northern Promenade, the Café and the Playground.

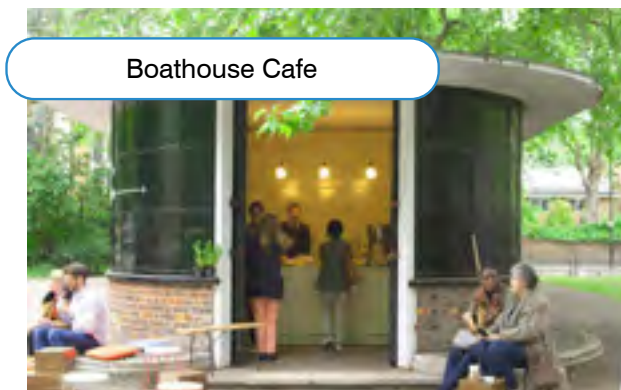
Significant tree plantings will buffer the Lawn from the existing townhouses on the boundary. The Event Lawn at around 1800m<sup>2</sup> will be able to cater for a range of events including concerts, markets and festivals, and is set up as a perfect viewing area for fireworks or Lake activation. In non-event mode, it is the ideal place for a picnic, or for rolling a ball around the lawn.

A small Boathouse Café will activate the north-east corner of the event lawn, providing food and beverage, toilets, as well as power and utilities for connection to larger events.

The Boathouse Pier is a small pier that arcs out beyond the Northern Promenade, into the Lake. It will facilitate small paddle and/or row boat rentals. It gives visitors an opportunity to wander out over the water and interact with the local bird life.

In the instance of events, a floating stage could be connected to the pier, to maximise 'on-land' space for event capacity.

On a lovely sunny day, the café would set up tables and chairs along the pier.



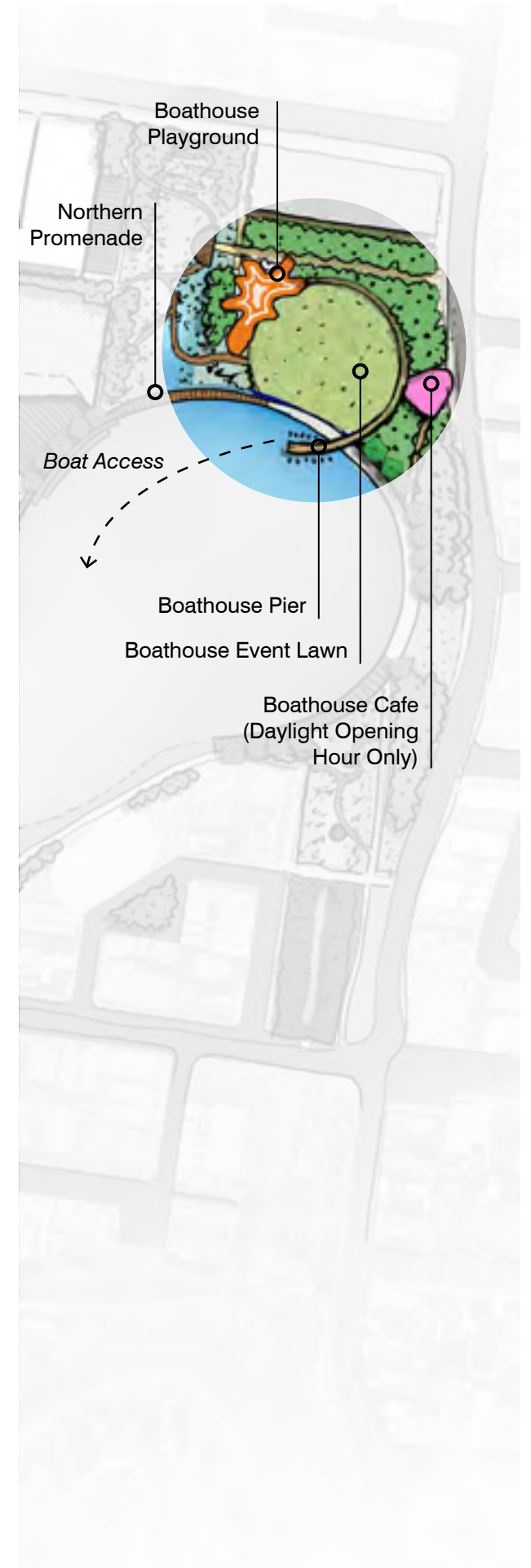
Boathouse Cafe

(Source: Bethnal Green Gardens)



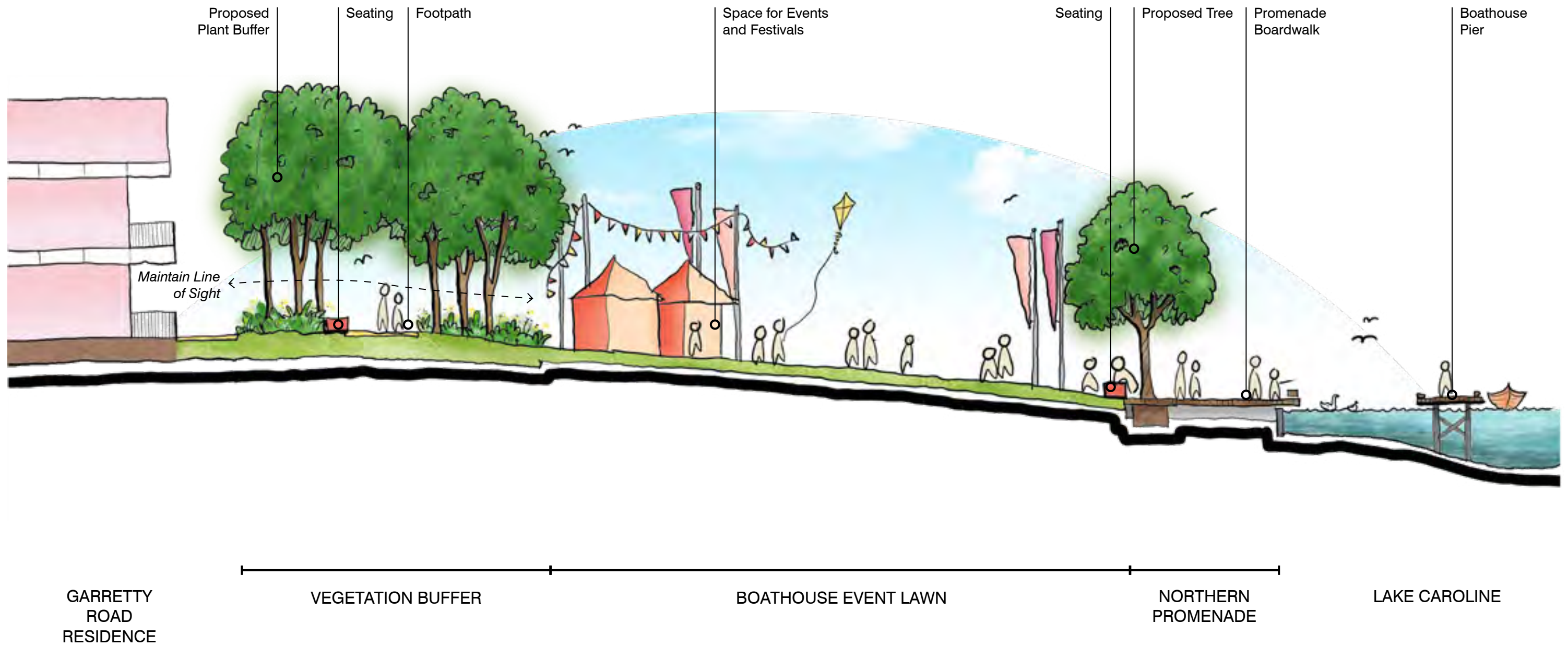
Boathouse Pier & Rental

Punta San Vigilio (Source: ambienthotel)





INDICATIVE SECTION





## 6.2 NORTHERN ECOLOGY CONNECTIONS

The Northern Ecology Connections comprises of two areas, which are the key inlet and outlet of Lake Caroline.

The Cascade Wetlands will build upon the wetlands to the north of Garretty Road, providing high quality, continued wetland habitat to connect directly into Lake Caroline.

This secluded area of habitat will enable discreet moments of connection for the community through lookouts, boardwalk opportunities and bird hides.



Boardwalk

South Parkland Wetlands by TCL (Source: Jackie Gu)



Northern Promenade

Annecy's Lakefront Promenade (Source: KC to Annecy)

The Weir Wetland



Adelaide Botanic Gardens Wetlands by TCL (Source: John Gollings)



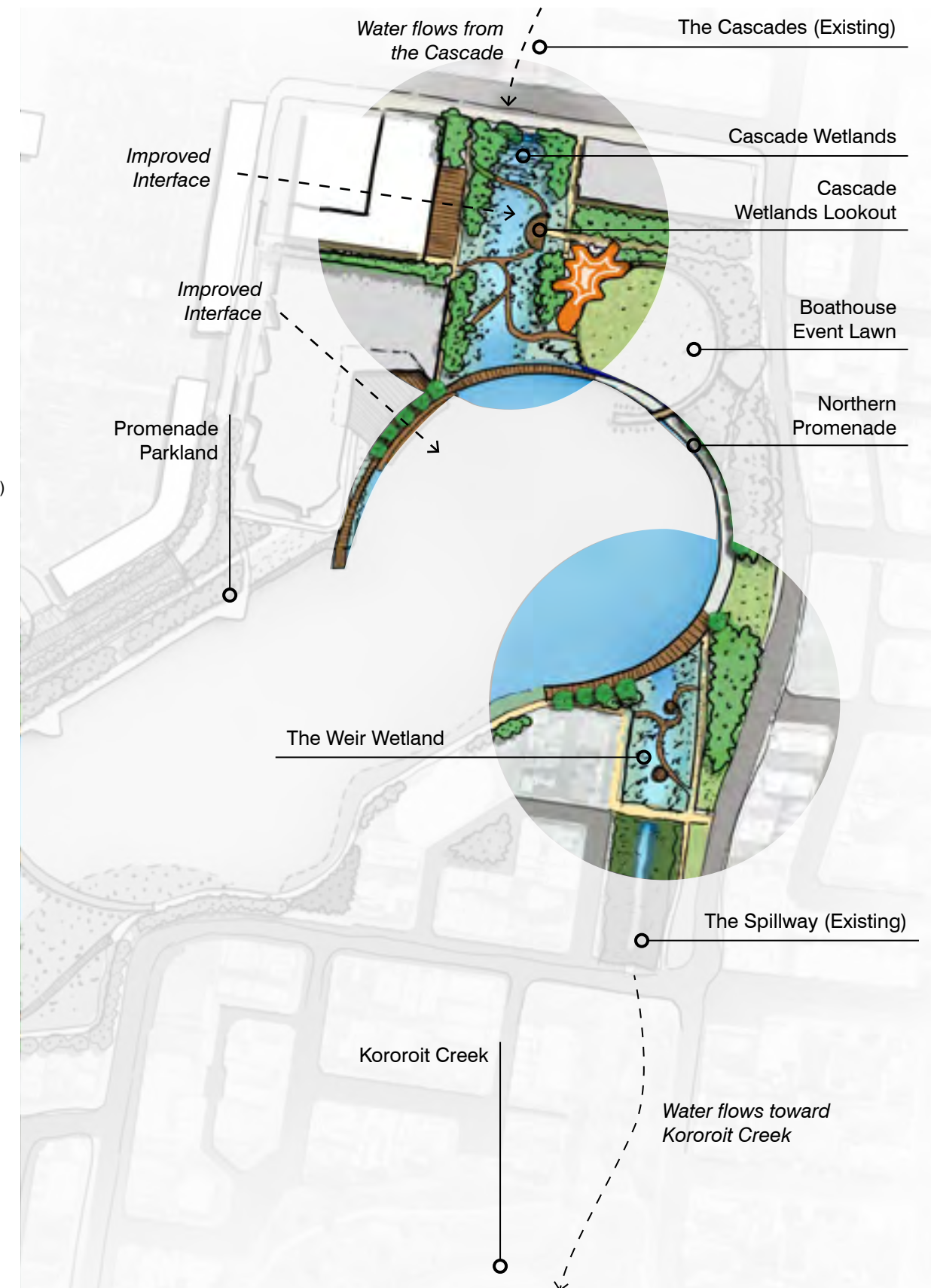
Cascade Wetland Lookout

South Parkland Wetlands by TCL (Source: Jackie Gu)

Providing a habitat buffer to Lake Caroline Weir, the Weir Wetland enables extended habitat connection to the Lake, as well as water cleansing ahead of overflow and discharge to the Kororoit Creek.

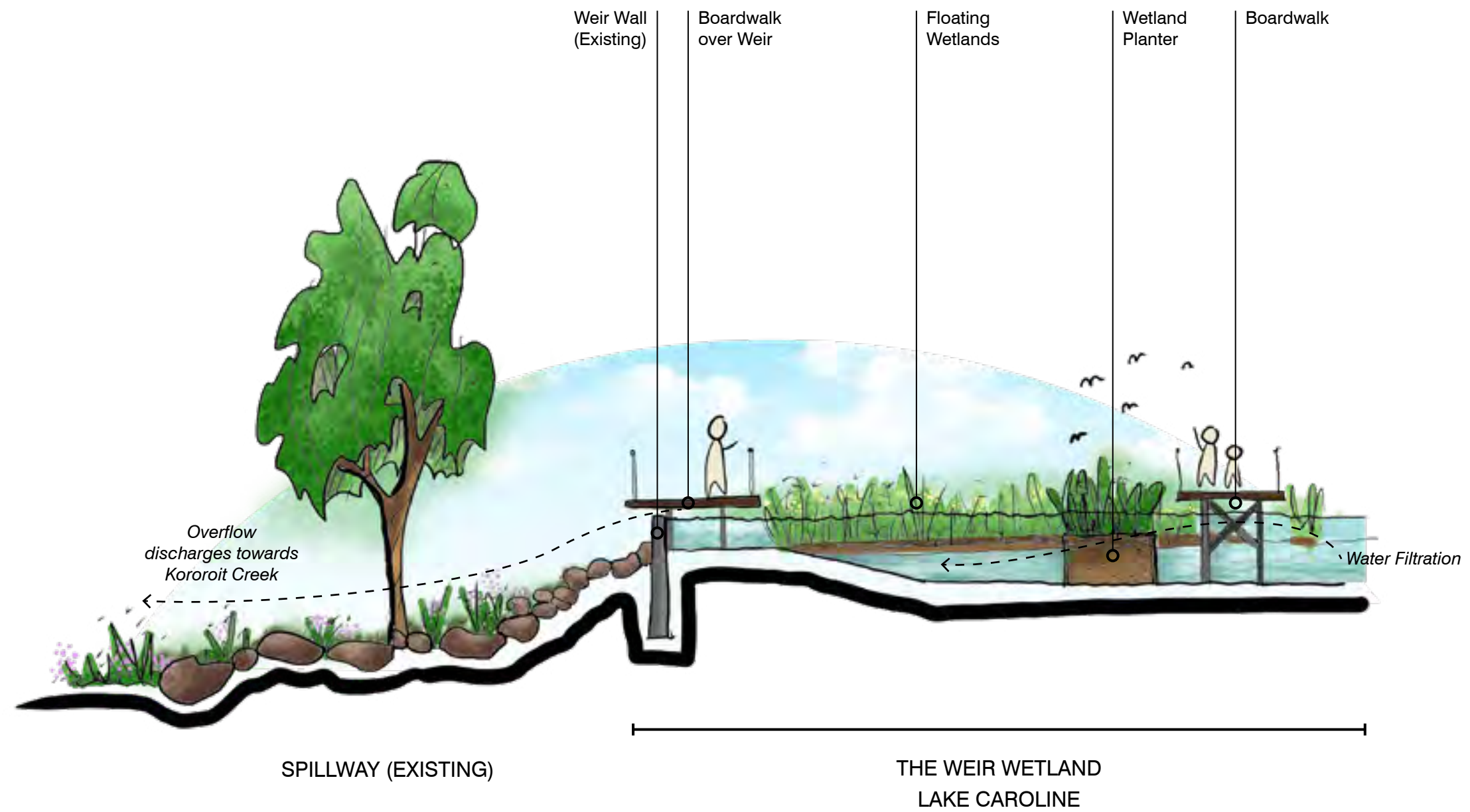
The generous Northern Promenade creates a sweeping arc at the northern end of the Lake. This grand gesture connects the Weir Wetlands, open lawns of The Esplanade, Boathouse Event Lawn and Playground, and the Promenade Parkland on the western side of the Lake.

It is envisaged that the Promenade will be tree-lined, providing much needed amenity and shade.





INDICATIVE SECTION





### 6.3 LAKE CROSSING BRIDGE

The Lake Crossing Bridge is proposed as a high quality floating pontoon for pedestrians and cyclists. It will provide a direct connection for residents on the south-west of the Lake to the retail and Shopping Precinct. For visitors to the Lake, it provides an alternative sequence of loops for walking, running and recreation.

Boat access will be allowed underneath the Bridge, which visitors could travel between the western end and eastern end of the Lake.

The additional connection will assist with passive surveillance and increased pedestrian and cyclist activity.

Boardwalk Bridge



(Source: Architonic)

Pontoon Bridge



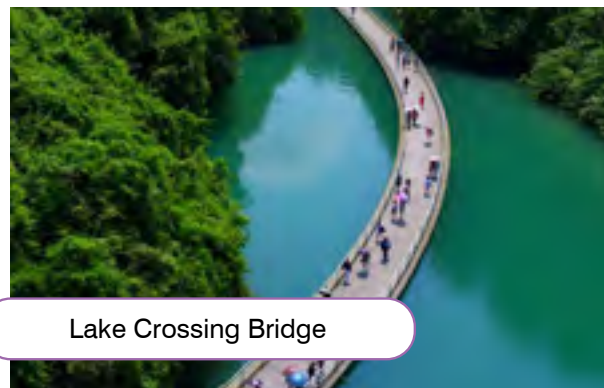
West India Quay Floating Bridge (Source: David Boardman)

Passage under Bridge



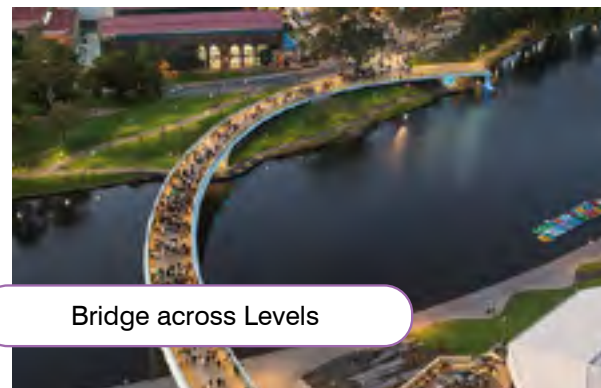
Nymburk Pedestrian Bridge by SHP (Source: Milos Vejchoda)

Lake Crossing Bridge

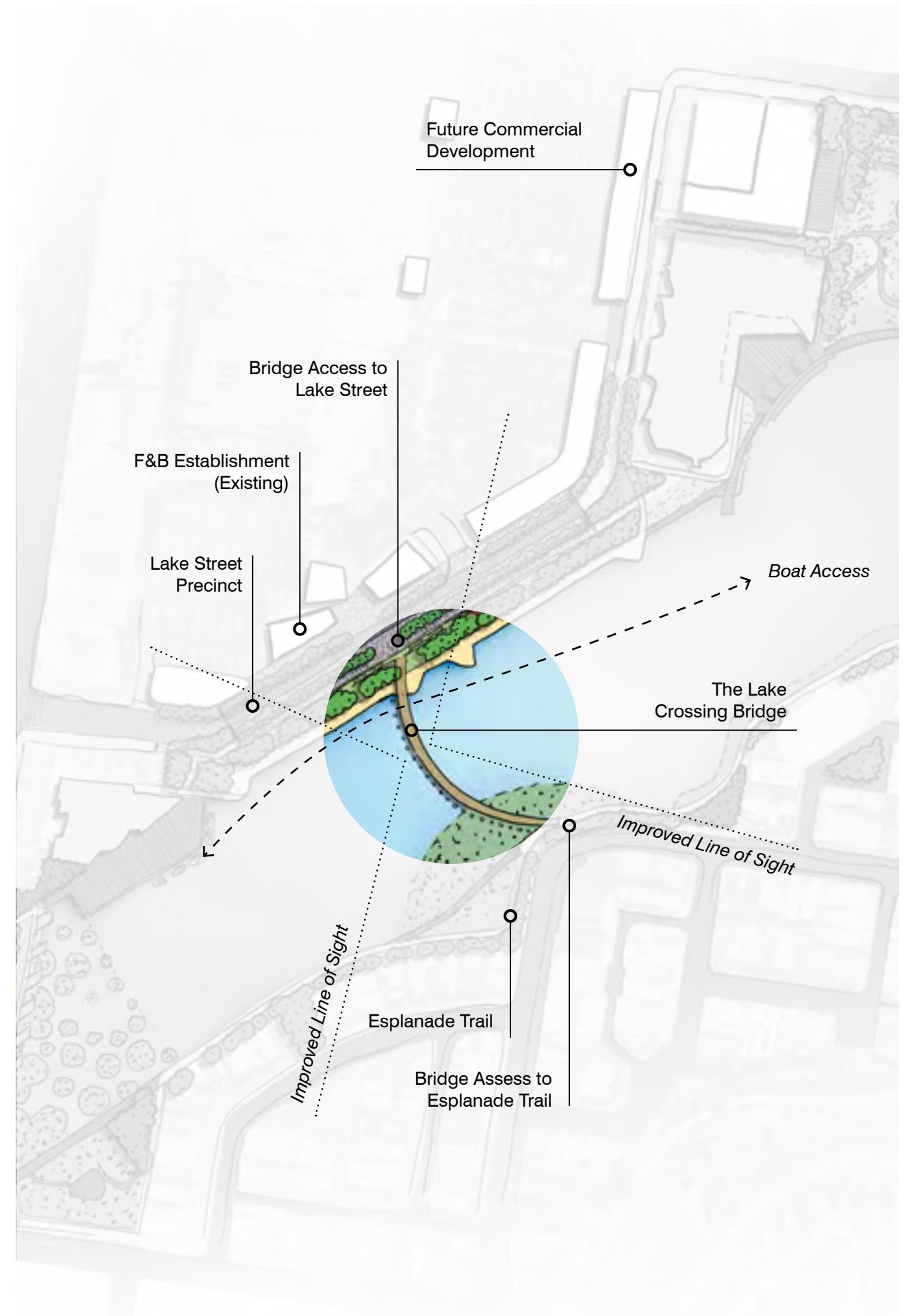


Enshi Floating Bridge (Source: unknown)

Bridge across Levels

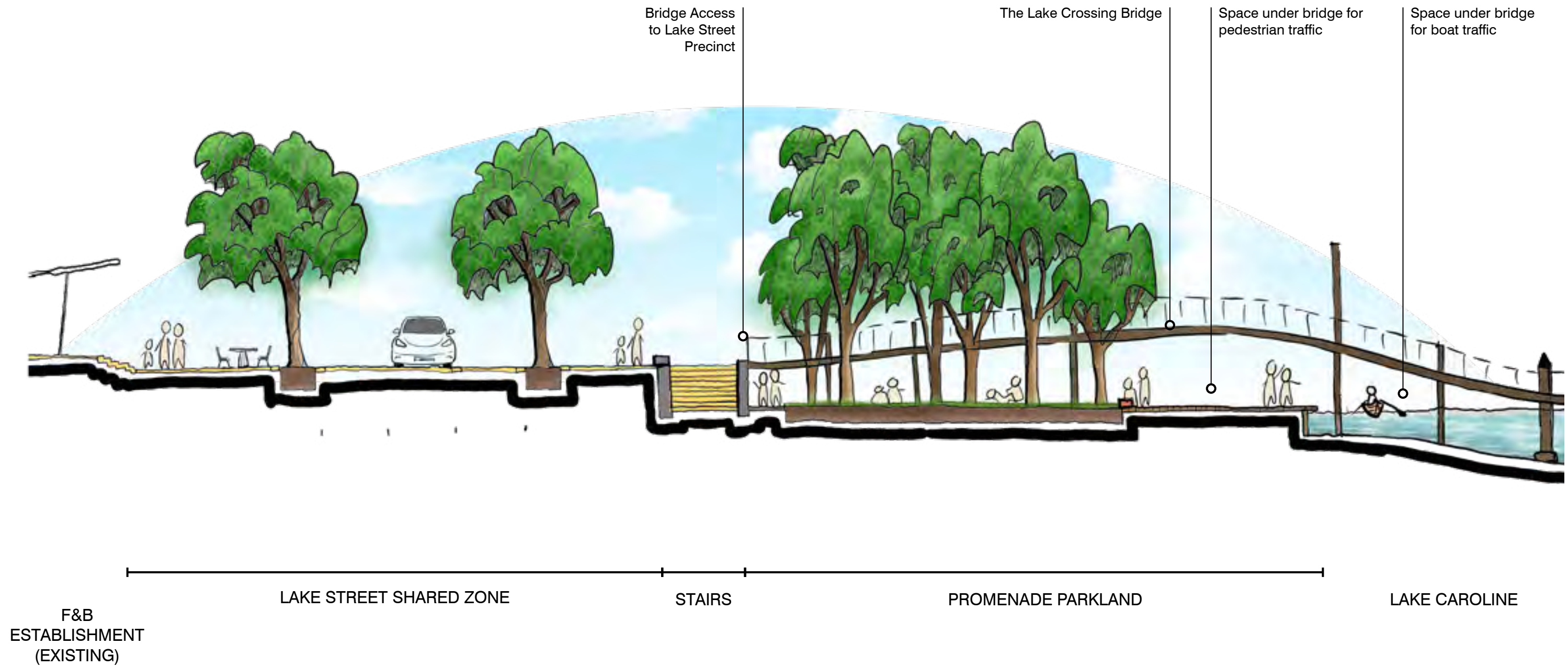


Riverbank Pedestrian Bridge by TCL (Source: John Gollings)





INDICATIVE SECTION





## 6.4 LAKE STREET PRECINCT

Lake Street is proposed as a significant upgrade to the existing street to allow for traffic calming, pedestrian priority and regular activation through markets and festivals.

It is proposed to include consistent, flush and quality paved materials across footpath, parking and road carriageway; significant street tree planting; café spillout from existing retailers and reduced traffic flow.



Sunday Markets

Meander Market (Source: City of Adelaide)



Events on Lake Street

Johnston Street Fiesta (Source: Colombiantojos)



Lake Street Shared Zone

Street in Barcelona (Source: unknown)

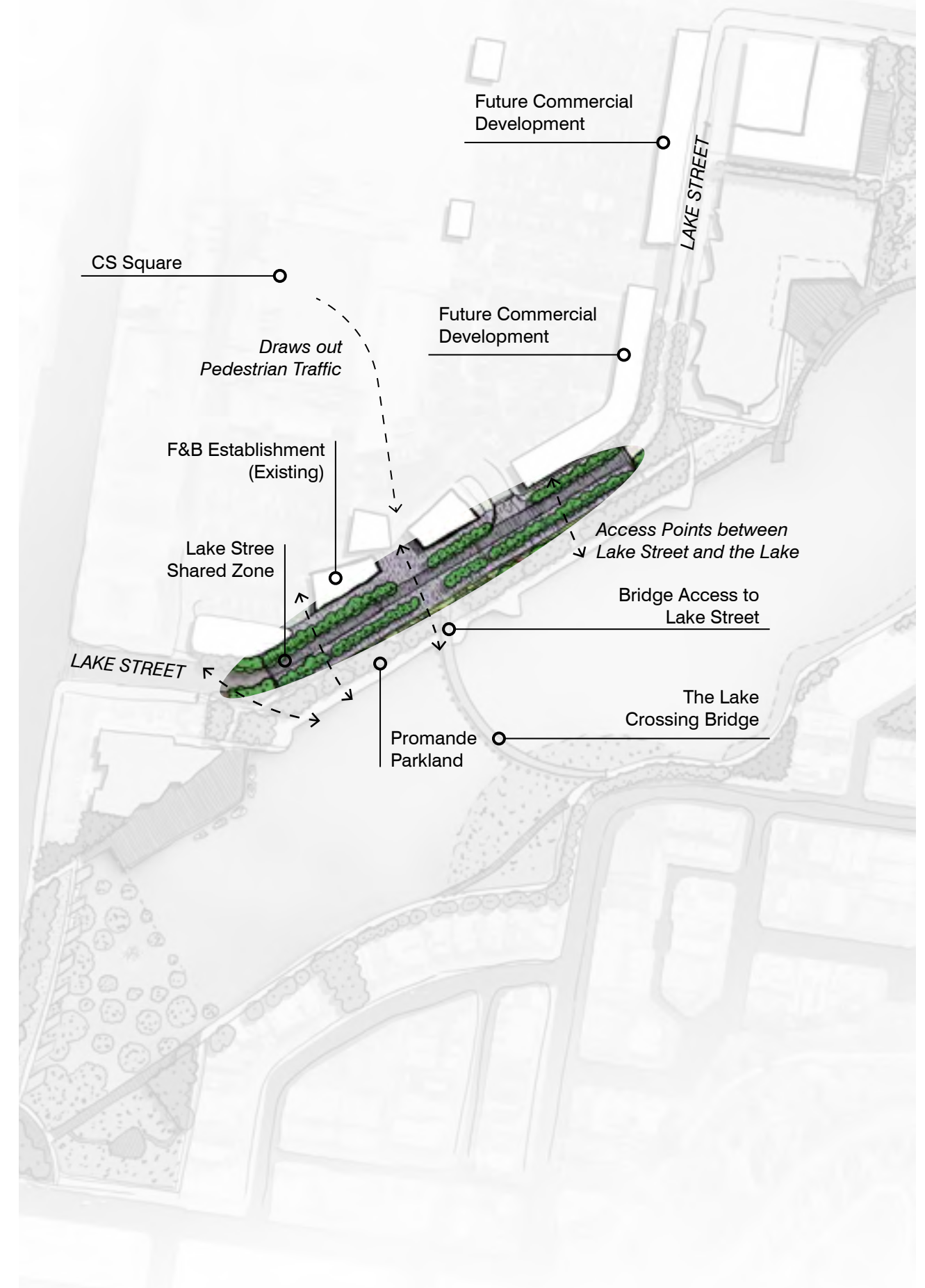


Lake Street Shared Zone

Copenhagen Shared Space (Source: Michael Kodransky)

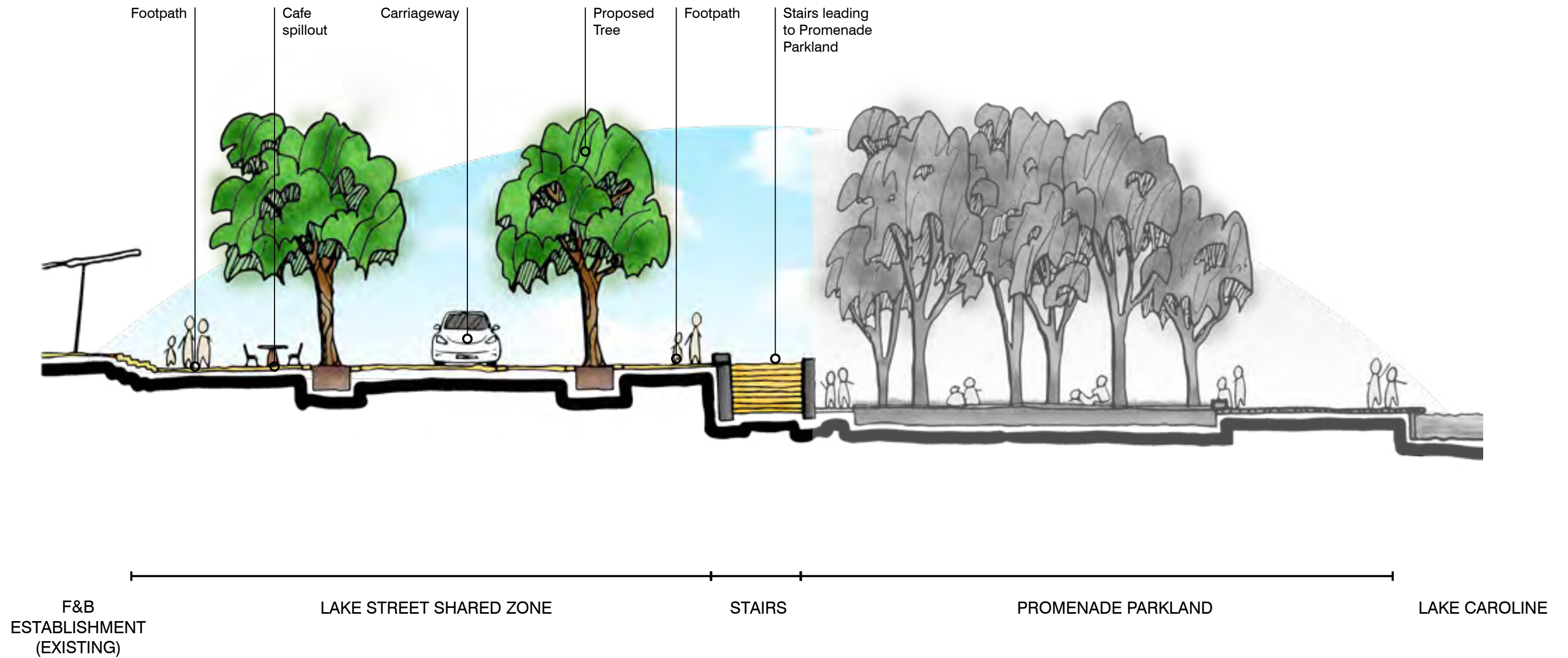
The transformation of this street would facilitate safe and direct connections from the Lake side to the retail and shopping precinct. It would stimulate investment along the western edge of Lake Street. Businesses that provide community facilities and stimulate further activation would be recommended.

The upgraded Lake Street will enable a variety of activation opportunities, including café spill out from adjacent businesses, regular weekend markets, and partial or full street closure to facilitate larger festivals and events.





INDICATIVE SECTION





## 6.5 PROMENADE PARKLAND

The Promenade Parkland seeks to reinvigorate the existing promenade landscape which is 'fussy' in its complex mounding, pathways and spaces.

It is proposed to be simplified into a generous lawn that can host significant trees for shade and amenity. A simple linear footpath or boardwalk would interface with the lake edge. This would allow for picnics, events, markets and festivals when required, and passive activation at other times.

Existing facilities and amenities will be reviewed and upgraded to support daily activation of Promenade Parkland. The park interface with CS War Memorial will be enhanced to facilitate the RSL events.



Promenade Parkland

North Terrace by TCL (Source: John Gollings)



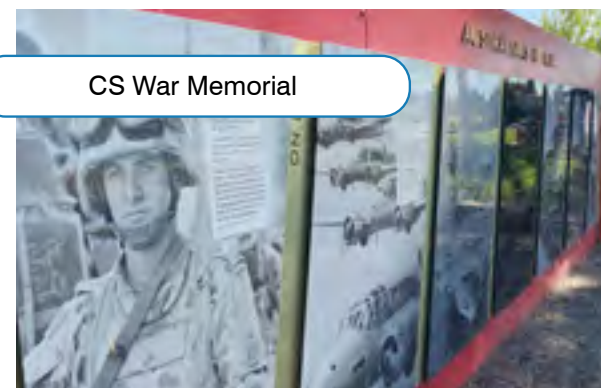
Boardwalk Promenade

Yarra River Promenade (Source: Victoria Walks)

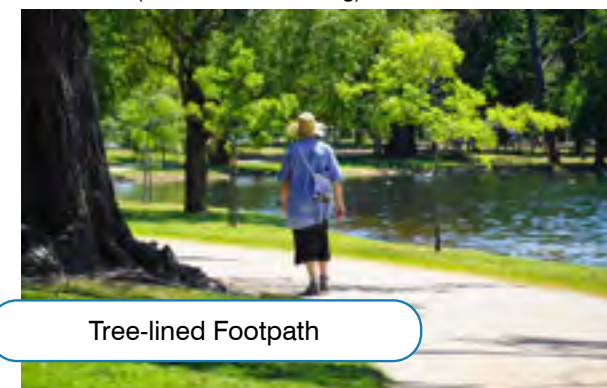


Lake Edge Linear Lawn

Yarra Trail (Source: David L Young)

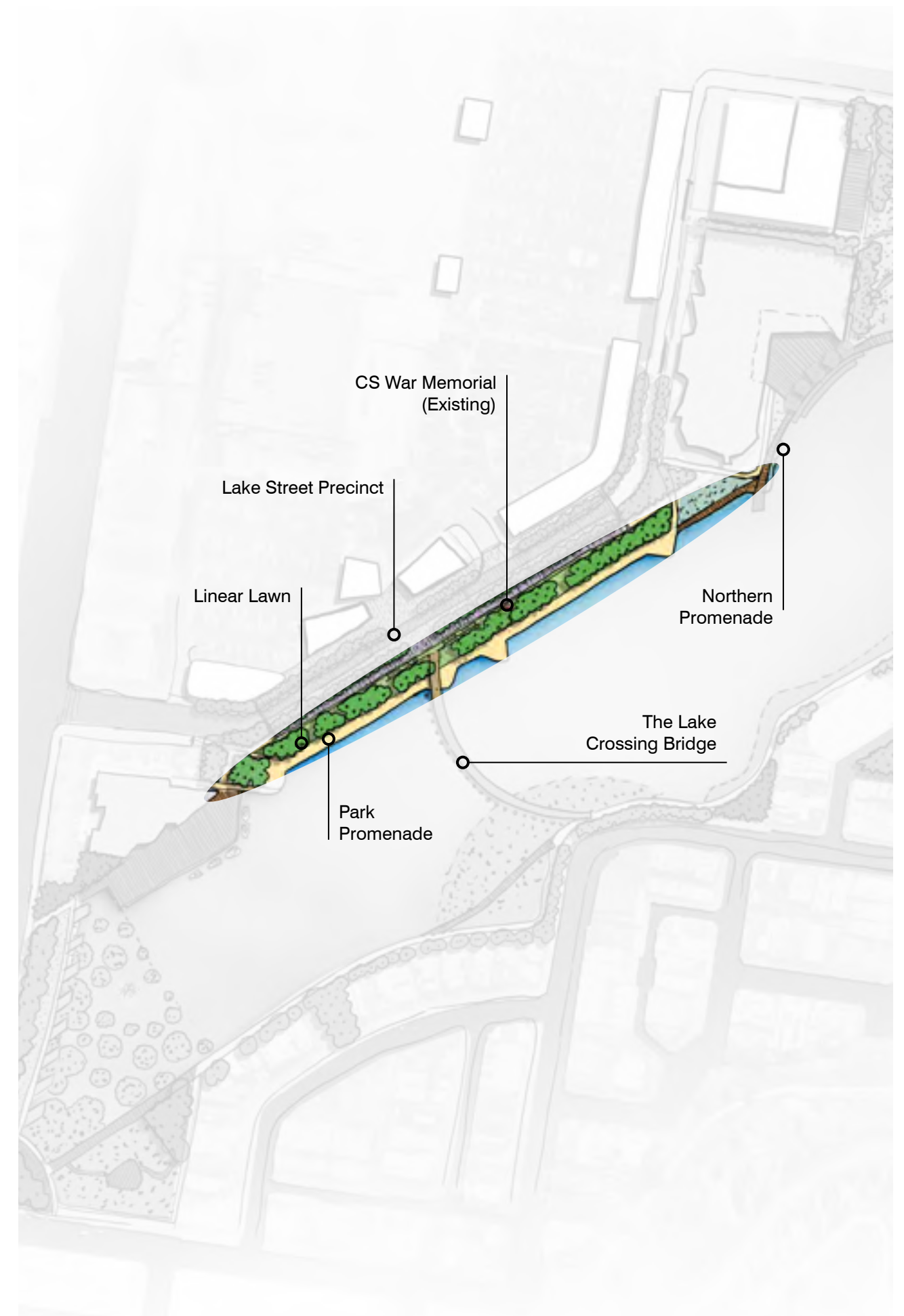


CS War Memorial



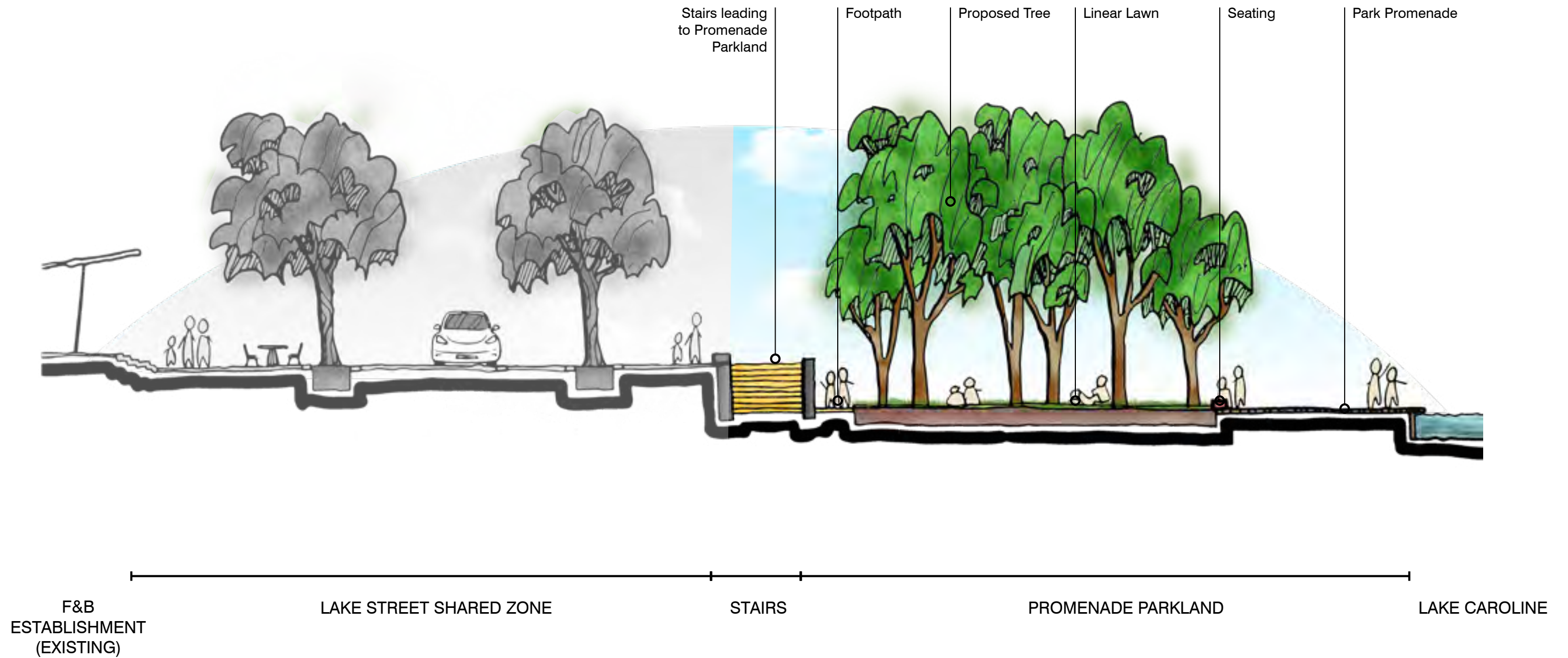
Tree-lined Footpath

Lake Wendouree (Source: Days Out with George)





INDICATIVE SECTION

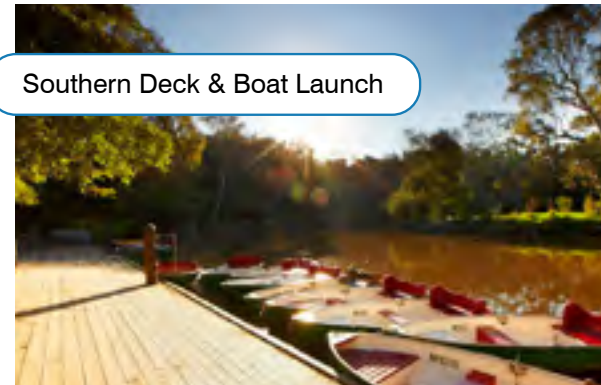




## 6.6 SOUTHERN DECK PRECINCT

The existing deck is proposed to be expanded out to a generous multi-use space for outdoor activation, and boat launch zone.

It is intended that the food and beverage offering and steps to the lower deck would be upgraded to enable more flexibility. It would be the ideal location for functions and pavilion set ups. Additional tree planting can be provided in the on-ground locations to create better existing amenity.

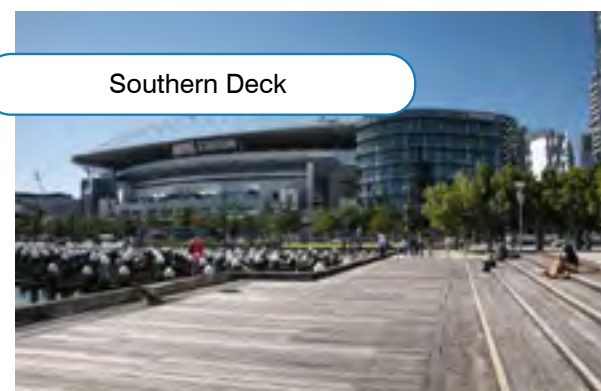


Southern Deck & Boat Launch



Southern Deck & Boat Launch

Punta San Vigilio (Source: ambienthotel)



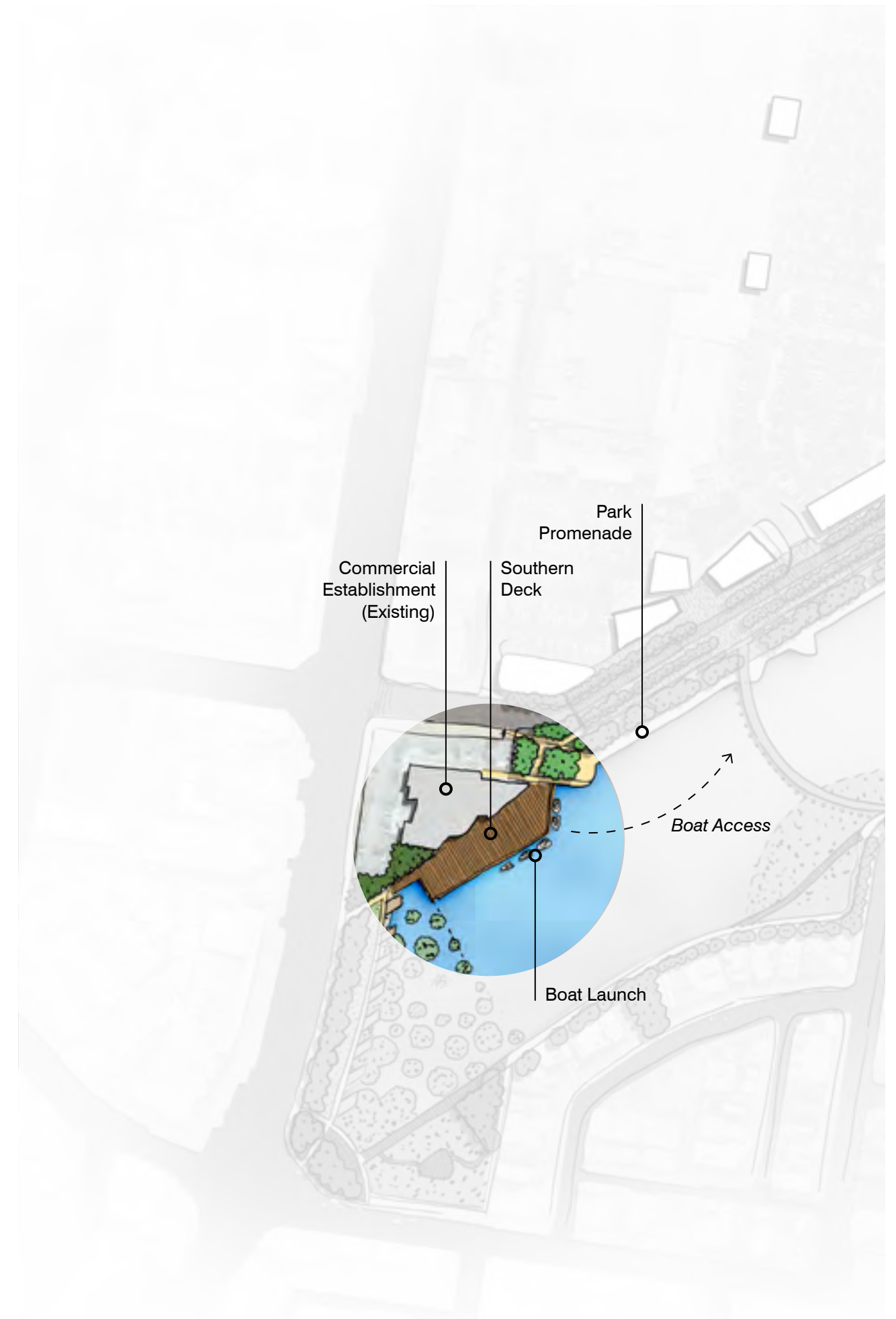
Southern Deck

Victoria Harbour at NAB by TCL (Source: unknown)



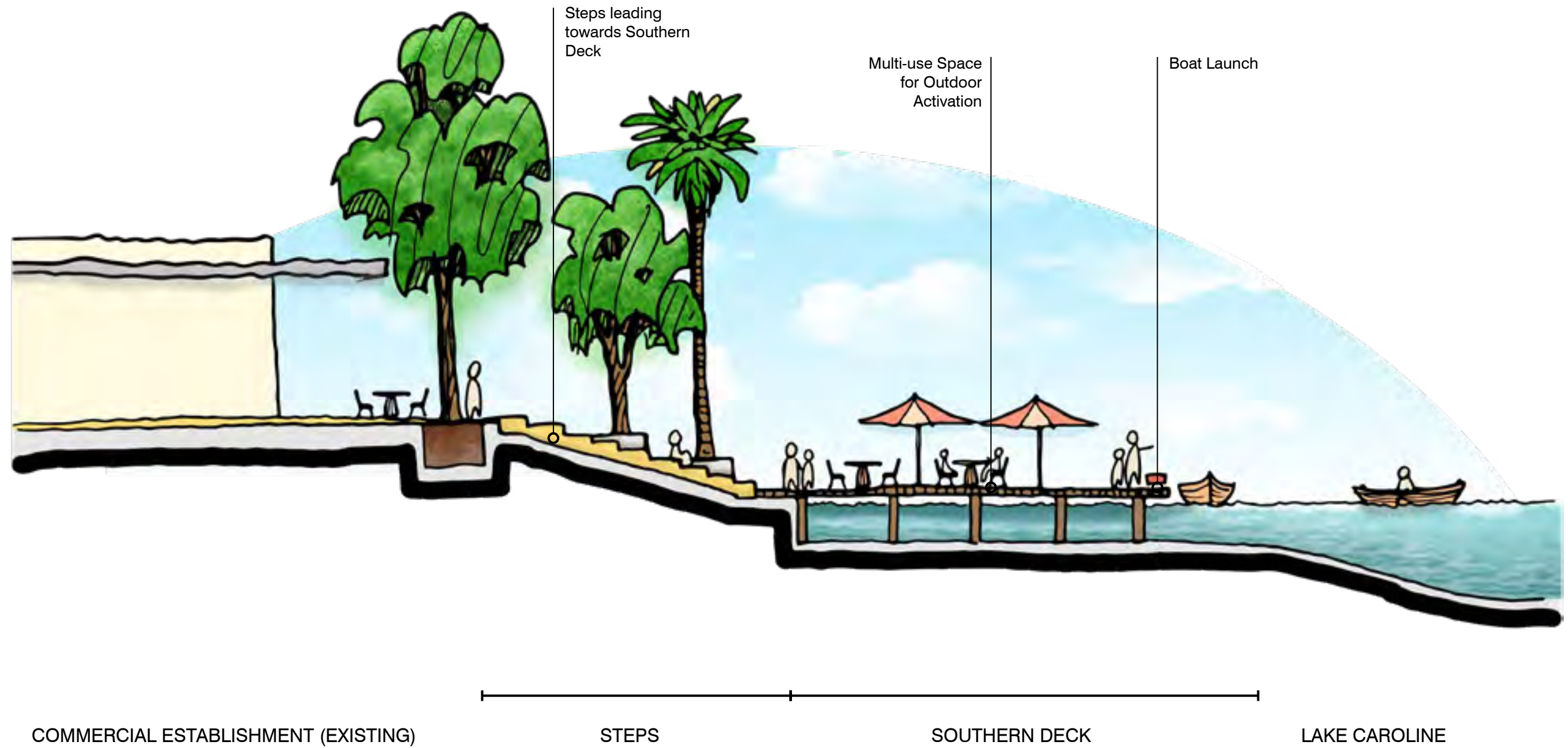
Southern Deck

South Wharf Promenade (Source: The Boatbuilders Yard)





INDICATIVE SECTION





## 6.7 SOUTHERN ECOLOGY PRECINCT

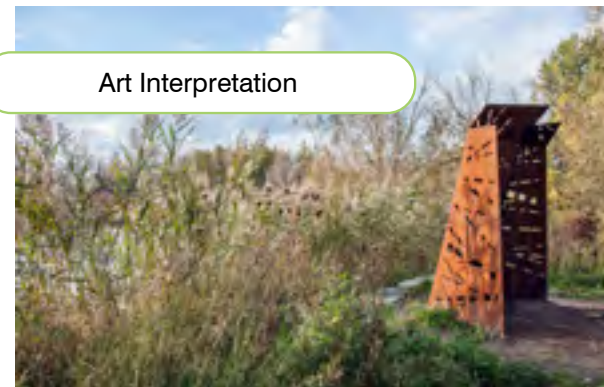
The Southern Ecology Precinct will transform the south end of Lake Caroline into a lush, shaded habitat zone, enhancing the small moments of ecology that already thrive in this area. It will provide a visually arresting entry view and foreground to the lake. The amenity is appropriate for the surrounding land use which is primarily residential.

Additional significant tree planting along the Esplanade and Caroline Springs Boulevard will provide both sound and visual buffer to the busy adjacent road.



Floating Wetlands

Redcliffe Golf Course Floating Wetland (Source: Fytogreen)



Art Interpretation

East Point Park Bird Sanctuary by PLANT Architect Inc (Source: Cameron Lintott)

The existing pocket park will be re-conceived to complement the Lake habitat. The area provides opportunities for lookouts, boardwalks, education and interpretation.

A series of Floating Wetlands will be installed within the lake, adjacent to the Southern Ecology Park, to provide additional water cleansing and filtration for the overall health of the lake. This will be facilitated by the existing fountain, upgraded to improve the aeration and water movement in the Lake.



Southern Ecology Park

Adelaide Botanic Garden Wetlands by TCL (Source: John Gollings)



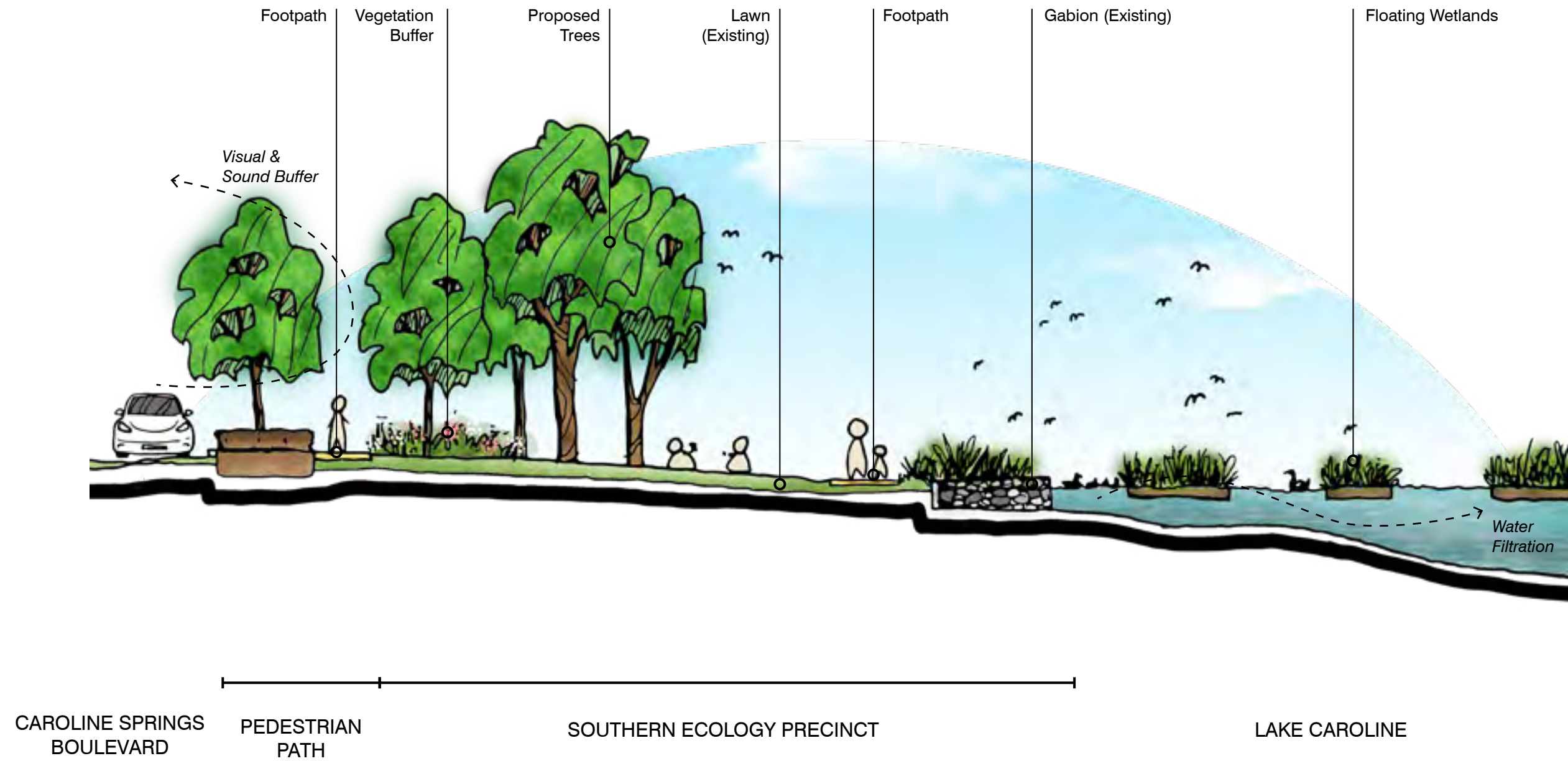
Southern Ecology Park

Oaklands Park and Wetland by TCL (Source: Sam Noonan)





INDICATIVE SECTION





## 6.8 ESPLANADE PRECINCT

Enhancing the amenity on the eastern residential side of Lake Caroline, the Esplanade Ecology Hub provides a substantial increase in vegetation and ecology along the edge of the Lake.

The extended habitat provides an immersive departure point for the Lake Crossing Bridge.

The Esplanade Trail will be upgraded to see improvements in lighting, furnishings and general amenity. It will be primarily characterised by an ecology-edged lake, generous footpath with tree plantings carefully placed between house boundaries to avoid blocking views of the Lake.



Esplanade Ecological Hub

Oaklands Park and Wetland by TCL (Source: Sam Noonan)



Esplanade Ecological Hub

Adelaide Botanic Garden Wetlands by TCL (Source: John Gollings)



Esplanade Trail

Jawbone Flora and Fauna Reserve (Source: Mamma Knows West)



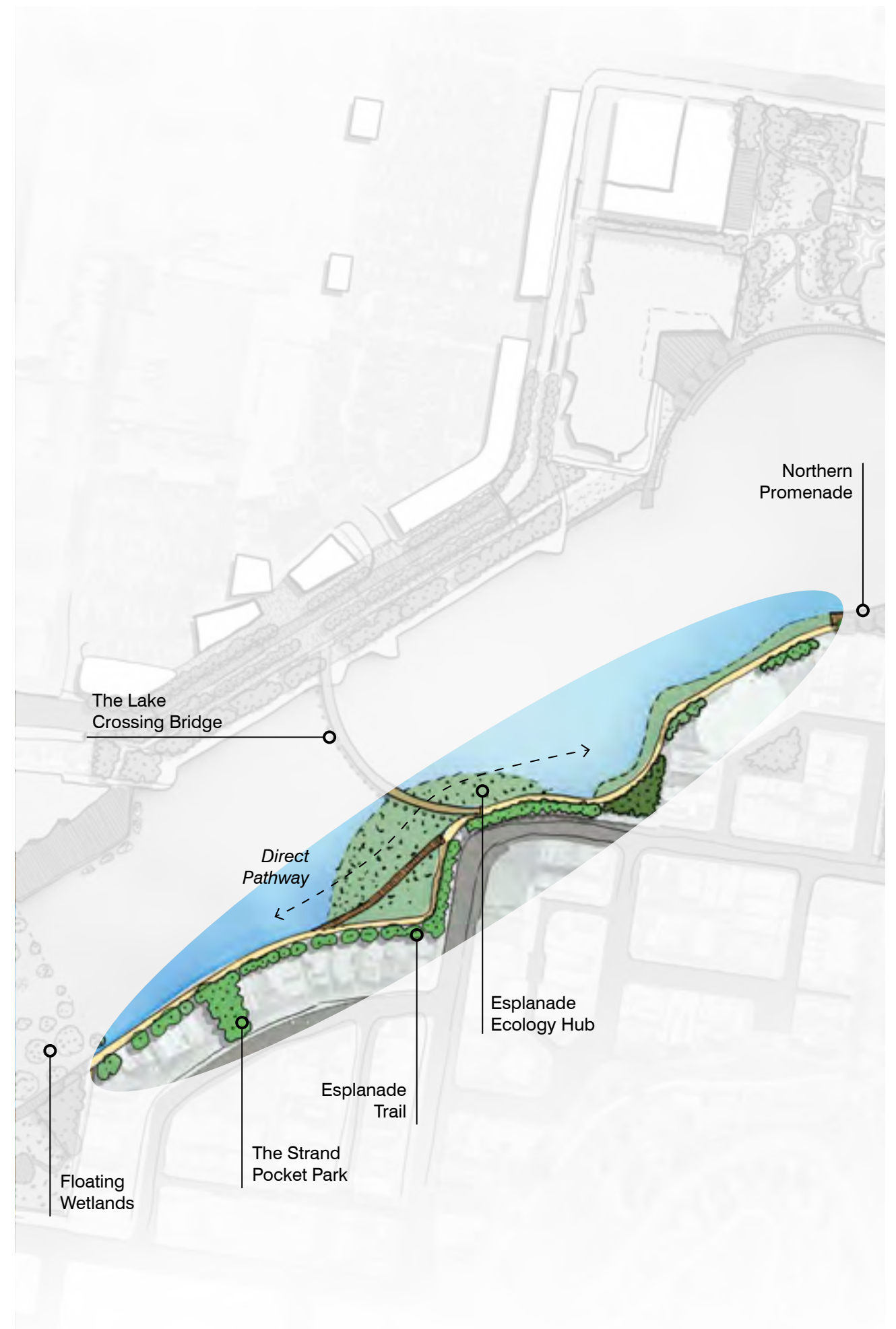
Esplanade Trail

Tidbinbilla Sanctuary by TCL (Source: ACT Parks and Reserve)

The Esplanade Trail will connect the Northern Promenade to the Floating Wetlands. The Lake Crossing Bridge will be accessed from the Trail as well.

### Tree Canopy Size Matters

- 5-20°C cooler underneath canopies
- Large trees with dense canopies can remove 60-70 times more air pollution than smaller trees
- Larger trees raise property values proportionally
- Tree with large canopy offers more shade protection against sun exposure
- Tree with large canopy offers better respiratory health by producing oxygen and intercepting pollutants more effectively
- Tree with large canopy offers better protection on street infrastructure and paving against exposure

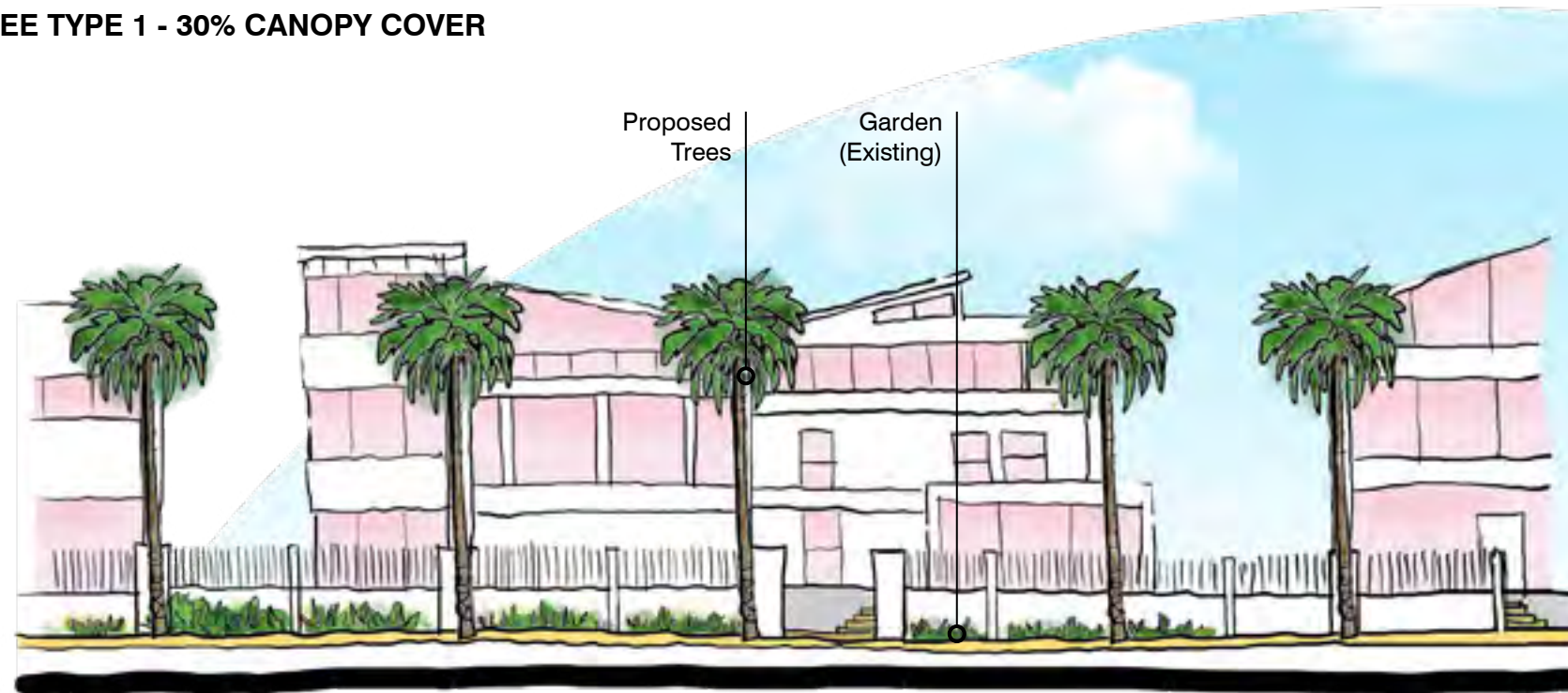




INDICATIVE ELEVATION

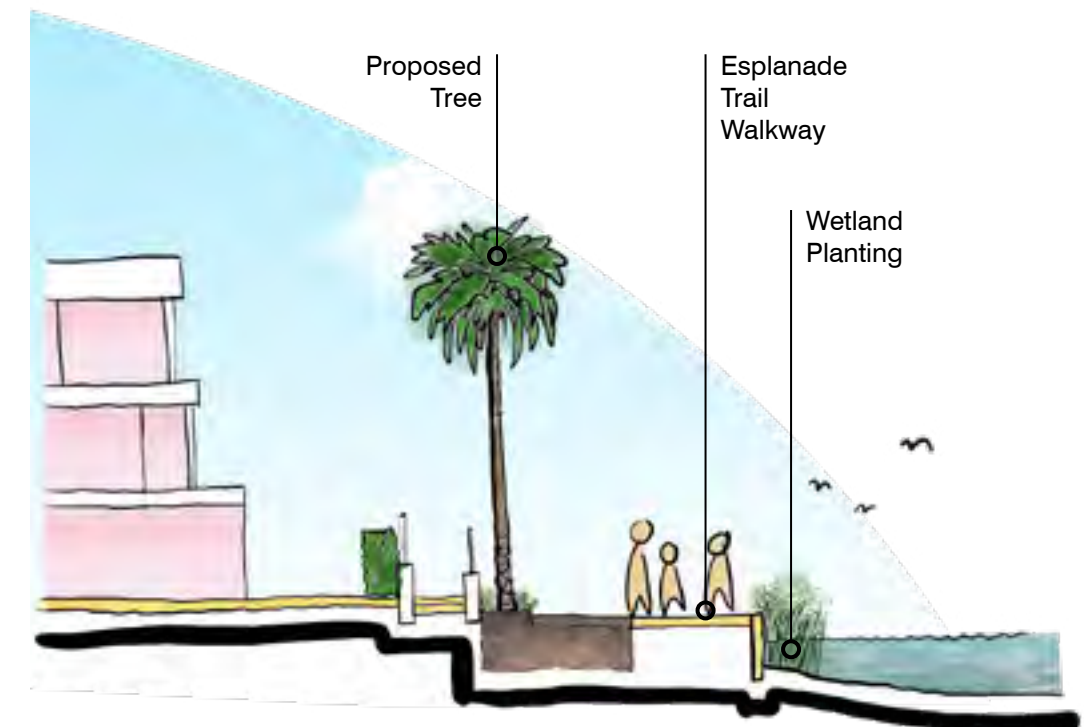
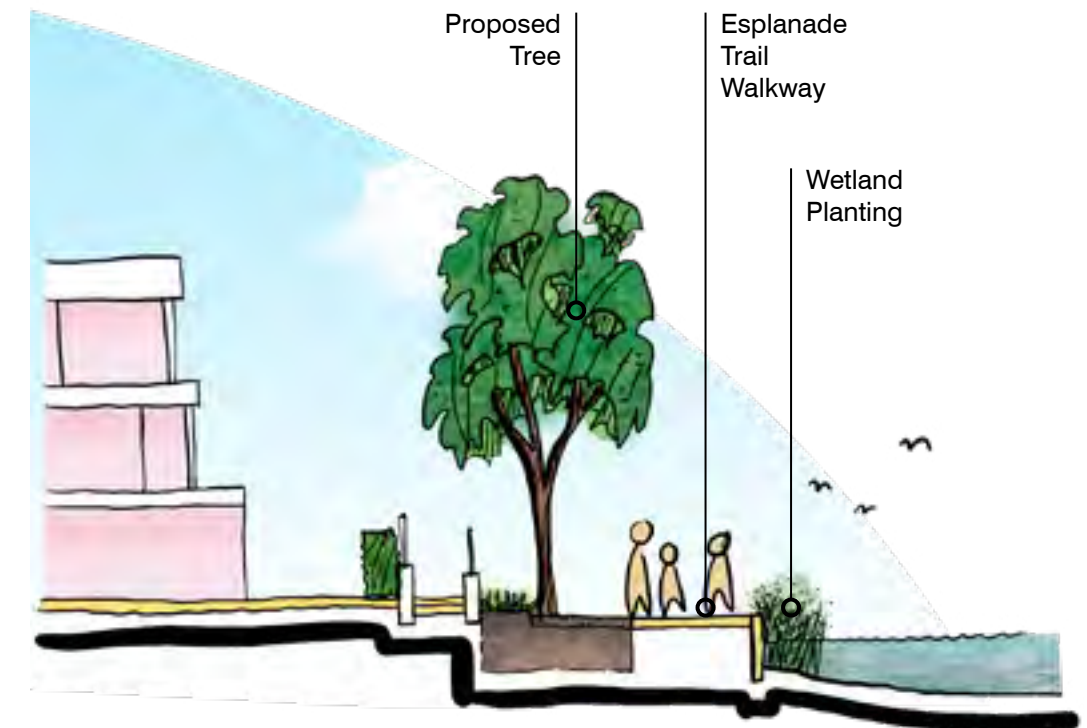


TREE TYPE 1 - 30% CANOPY COVER



TREE TYPE 2 - 5% CANOPY COVER

INDICATIVE SECTION



RESIDENCE  
(EXISTING)

ESPLANADE  
TRAIL

LAKE CAROLINE





# 7 ACTIVATION STRATEGY



# ACTIVATION STRATEGY

This Activation Strategy provides a well-rounded approach to activation around the Lake Caroline Precinct, by suggesting activation opportunities under the following pillars:

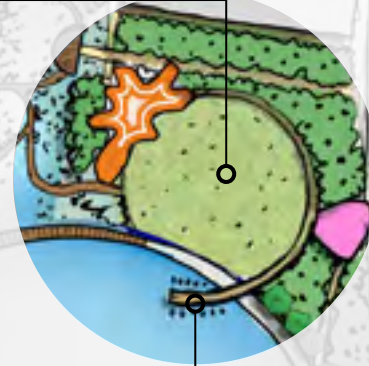
- Creation of public amenities to facilitate activation (i.e. picnic areas, playgrounds, lawn, promenades etc)
- Council facilitated programming and events (festivals, markets, concerts)
- Private operator activation through retail offerings (cafes, boat hire etc)





## 7.1 BOATHOUSE EVENT LAWN ACTIVATION

- Picnic
- Recreational activities
- Ball games
- Farmers markets
- Festival & events
- Concerts
- Lake event seating
- Stage and amphitheatre
- Night-time events



Boathouse Event Lawn



Lakeside Alive 2024 (Source: Melton City Council)



Caroline Springs Annual Carols (Source: Star Weekly)



Picnic on Lawn

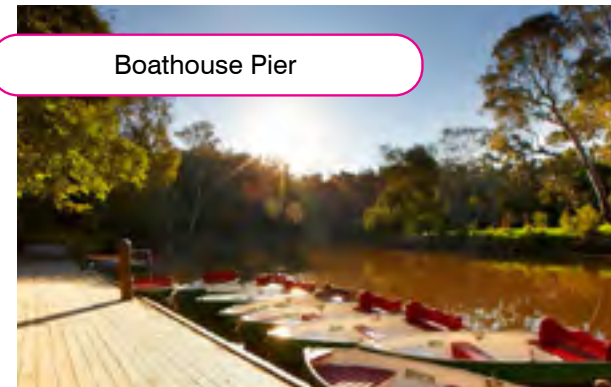


Lakeside Alive 2024 (Source: Melton City Council)

## 7.2 BOATHOUSE PIER ACTIVATION

- Boat Hire
- Café & dining activation along the pier
- Lake event seating

Boathouse Pier



Boat Hire (Source: Studley Park Boathouse)



Dining along Pier (Source: BLU Crabhouse & Raw Bar)



Punta San Vigilio (Source: ambienthotel)

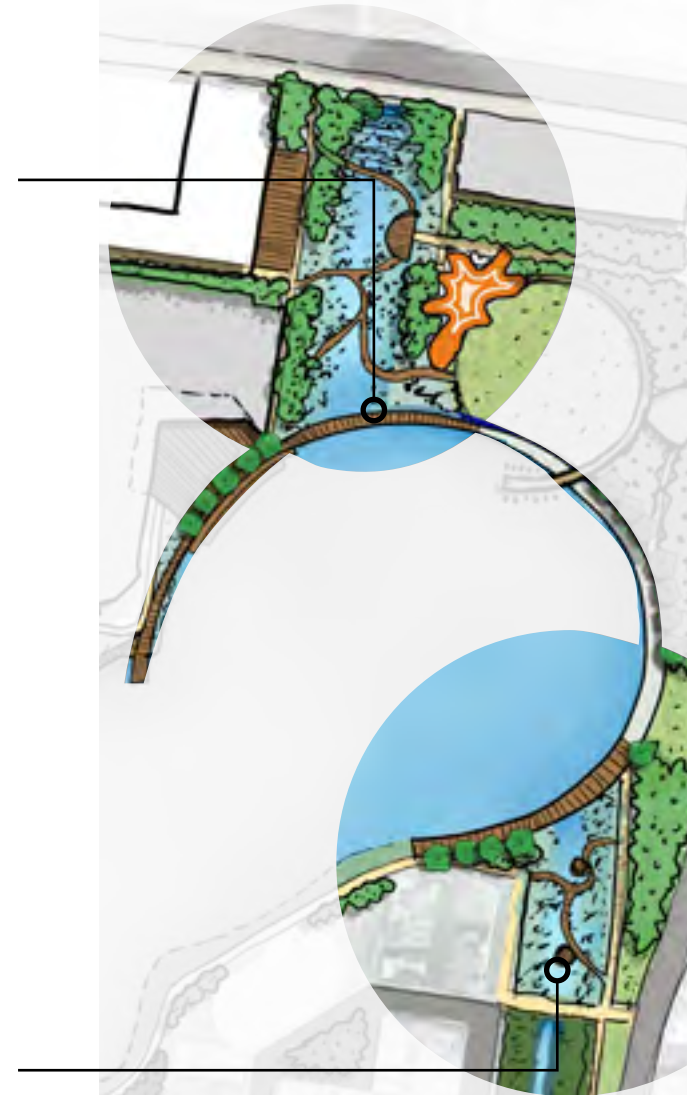


Lakeside Alive 2024 (Source: Melton City Council)



### 7.3 NORTHERN PROMENADE ACTIVATION

- Lakeside events
- Picnic
- Active recreation



### 7.4 THE WEIR WETLAND ACTIVATION

- Bird watching
- Ecology walking & education tours

Northern Promenade



Lakeside at Carousel (Source: Lucas Worcester)

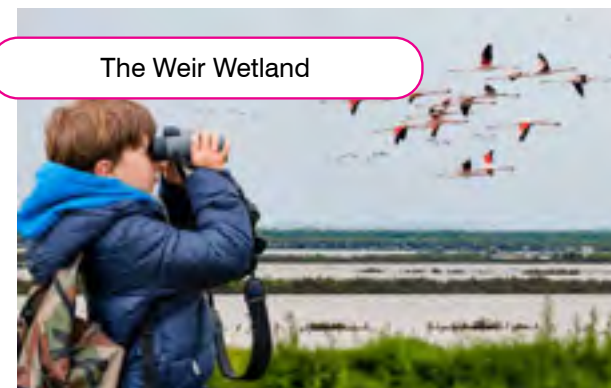


Active Fitness (Source: Topio)



Markets (Source: Homegrown Markets Speers Point)

The Weir Wetland



Birdwatching (Source: Backyard Bird Watchers)



Guided Educational Tours (Source: ACT Parks and Reserve)



Educational Walks (Source: John Gollings)



Self-Guided Tours (Source: ACT Parks and Reserve)



### 7.5 LAKE STREET SHARED ZONE ACTIVATION

- Café spillout from adjacent businesses
- Regular weekend markets
- Street closure to facilitate larger festivals

Lake Street Shared Zone



Farmers Markets (Source: City of Adelaide)



Cafe Spillout (Source: TkKurikawa)



Sunday Market on roadside (Source: Arts Centre Melbourne)

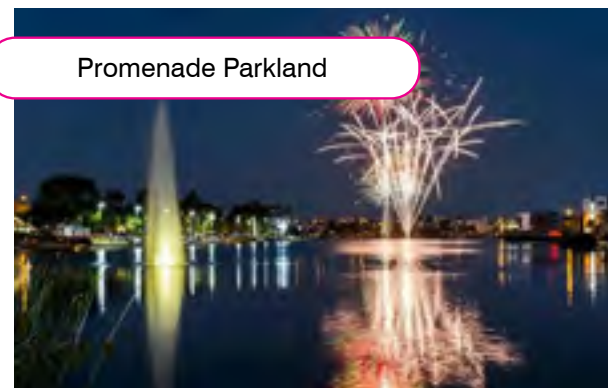


Festival on Street (Source: Beat Magazine)

### 7.6 PROMENADE PARKLAND ACTIVATION

- Picnics
- Lakeside Festivals
- Lake Event viewing

Promenade Parkland



Fireworks (Source: Melton City Council)



Picnic on Lawn



Lakeside Alive (Source: unknown)

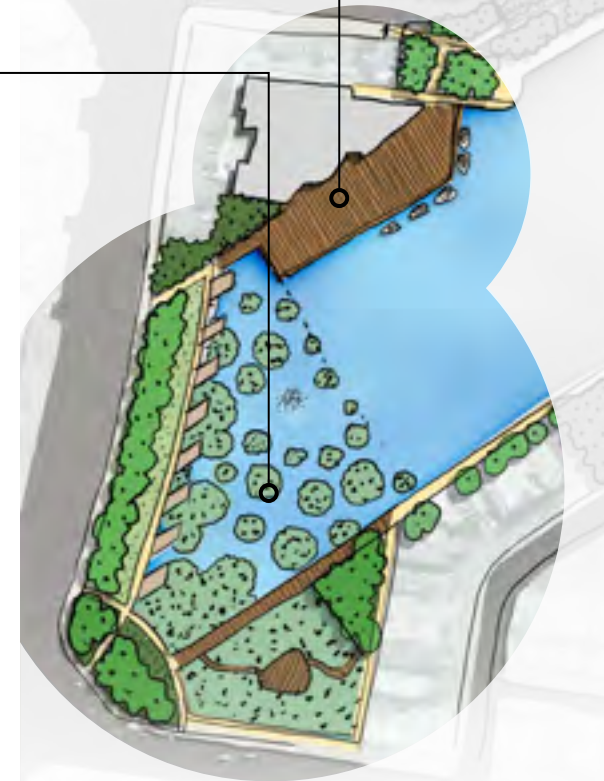


### 7.7 SOUTHERN DECK & BOAT LAUNCH

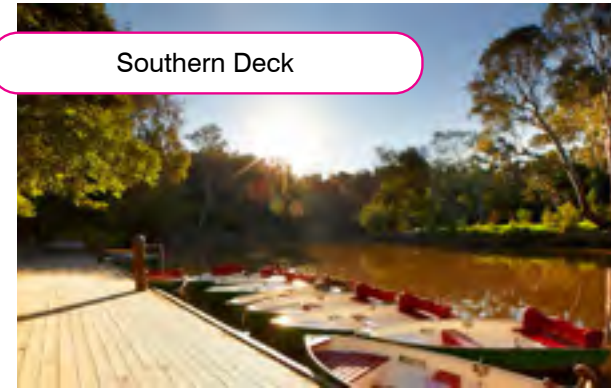
- Café spillout and dining
- Boat hire
- Small scale events
- Outdoor booking on deck

### 7.8 SOUTHERN ECOLOGY PRECINCT ACTIVATION

- Picnic
- Yoga
- Bird watching
- Ecology walking & education tours



Southern Deck



Boat Hire (Source: Studley Park Boathouse)



Small scale events (Source: unknown)

Promenade Parkland



Birdwatching (Source: ACT Parks and Reserve)



Picnic on Lawn



Cafe Spillout (Source: The Boatbuilders Yard)



Outdoor Booking (Source: Royal Botanic Gardens Melbourne)



Yoga (Source: Cape Town Managzine)



Community Exercise Group (Source: NBC News)





T.C.L